



ANNUAL REPORT

2018



TO OUR FRIENDS & SUPPORTERS

Once again, it has been a fantastic year for the National Forest Foundation. And once again, we thank each of you for helping us achieve so much. You have doubtless heard organizations say “Our work would not be possible without your generous support.” It is a truism we can’t ignore, so please accept the grateful thanks from each NFF staff and Board member.

We take immense pride in doing the work that we do: improving an incredible public lands estate that provides so much for so many. Our work restoring these lands and connecting more Americans to their outsized value is a privilege we take seriously.

This Annual Report highlights this work and provides us the chance to recognize all of you who make it possible. One activity we’ll highlight here is the launch of our most ambitious campaign ever. We will plant 50 million trees in the next five years to restore thousands of acres of wildlife habitat, protect critical watersheds, and provide generations of Americans with healthy, resilient forests. We’re proud to report that the campaign is off to a great start and that businesses and individuals are finding this effort resonates.

This is but one of the ways we improve our forests. Across the country, our staff work to improve recreational opportunities, restore forest health and prevent the next mega wildfire, and improve wildlife habitat for aquatic and terrestrial species. We accomplish our work through partnerships, innovative thinking and by promoting collaborative conservation that results in real on-the-ground improvements.

Our forests face constant challenges—everything from hurricanes to mega fires and from over-use to neglect. The NFF tackles these challenges in big and small ways. Whether we’re working in Los Angeles to empower the next generation of conservation professionals or investing millions of dollars in our *Treasured Landscapes* sites, our focus never wavers. We are committed to these 193 million acres and we are grateful that you have joined us.

Sincerely,



Mary Mitsos
NFF President



Craig R. Barrett
NFF Board Chair

“We accomplish our work through partnerships, innovative thinking and by promoting collaborative conservation that results in real on-the-ground improvements.”



Trees. Grasslands. Rivers. Wildlife. Shorelines. Mountains. Our National Forests have all of these. But forests are more than these individual aspects. They are complex ecosystems where each piece plays a critical role, making the forest more than the sum of its parts. The National Forest Foundation is the same.

Our field directors work regionally to benefit local forests. Our development team works across the country to raise the funds we need to improve these places. Our Missoula office helps with communications, administration, granting and more, ensuring all of the pieces work well and efficiently. Our supporters, you, are a key part of the NFF as well. Individually, we are all just people with a passion for America's public lands. Together we are a movement.

Tree Planting

This effort represents the most ambitious campaign the NFF has ever attempted. But it also represents one of our best opportunities to reach Americans with an inspiring message and an opportunity for immediate action. In 2018, we made good progress, planting a record 2.6 million trees. We also invested in new products and outreach strategies to engage more Americans in this critically important effort.

Communications

As the challenges facing our National Forests grow, so does our need to communicate effectively and creatively about these landscapes. We're proud of our growing communications program and how we collaborate with you, our partners, to share the stories of the work we do together. In 2018, we set a goal to reach 10 million Americans and exceeded that goal many times over, in large part due to our incredible partnerships. But too many Americans still don't know about these landscapes. That's why we added new communications staff in 2018 and are redoubling our communications efforts moving forward. We invite you to connect with us through social media and other ways to stay abreast of forest issues and to become engaged in the NFF's work.

“As the challenges facing our National Forests grow, so does our need to communicate effectively and creatively about these landscapes.”



Treasured Landscapes, Unforgettable Experiences

Our National Forests are diverse: ecologically, geographically and even culturally. Our *Treasured Landscapes, Unforgettable Experiences* conservation program is a direct reflection of this diversity. At each of our sites, we convene a local group of stakeholders and work to address the restoration needs most important to that forest. Forest needs in Florida are vastly different from forest needs in Alaska, and our collaborative, local approach ensures we craft solutions that work for each. In 2018, we completed our work at our Okanogan-Wenatchee and Idaho Panhandle National Forest sites. We are excited to be adding new sites to this program in 2019. Central to our *Treasured Landscapes* strategy is our multi-year commitment to partners in each location.



NFF PROGRAMS

Strategic Projects

The NFF's mission is to restore America's National Forests. Our strategic investments allow us to fulfill our mission when opportunities arise that don't fit within our traditional granting programs. Each of these projects expands our impact and provides opportunities for our supporters to restore their backyard forests.

In FY 2018, the NFF invested in 36 strategic projects that restored areas on 21 units of the National Forest System.

Community Capacity and Land Stewardship Program

Initiated in 2011, the Community Capacity and Land Stewardship Program (CCLS) builds the capacity of local collaborative efforts to achieve watershed restoration objectives in select regions of the National Forest System.

In FY 2018, the NFF worked with Regions 6 and 10 of the U.S. Forest Service to distribute 18 grants through the CCLS program. This funding improved the capacity of local organizations to work with the agency and each other on collaborative restoration projects on nine National Forest units.



Treasured Landscapes, Unforgettable Experiences

The NFF's *Treasured Landscapes, Unforgettable Experiences* conservation program is our nationwide restoration initiative focused on iconic National Forest and Grassland sites. In FY 2018, we wrapped up our work at two sites, the Okanogan-Wenatchee and Idaho Panhandle National Forests.

Through the Treasured Landscapes program, the NFF distributed 59 subawards to 57 nonprofit organizations or contractors in FY 2018. These projects resulted in high-quality restoration work on 17 National Forests, while supporting local economies and connecting local communities to their backyard forests.



Matching Awards Program

The NFF's largest grant program, the Matching Awards Program (MAP), funds on-the-ground restoration and conservation projects that enhance forest health and outdoor experiences on our National Forests and Grasslands. These projects are highly leveraged with matching funds, in-kind services, and volunteer contributions.

In FY 2018, the NFF issued 47 MAP grants for work in 49 units within the National Forest System.

“Our forests face constant challenges—the NFF tackles these challenges in big and small ways.”



NFF PROGRAMS



Conservation Connect

The NFF's Conservation Connect program helps community groups, interested citizens, businesses, local government officials and the U.S. Forest Service come together to improve National Forest management. Whether facilitating collaborative groups, providing a suite of resources and tools or hosting peer-learning sessions, the Conservation Connect program and staff reach thousands of people annually.

In FY 2018, the NFF held 16 peer-learning sessions with 1,690 total participants. The NFF also provided facilitation and technical assistance to 10 collaborative conservation initiatives.



Ski Conservation and Forest Stewardship Fund Programs

Our innovative Ski Conservation and Forest Stewardship Funds give patrons of partner ski areas, lodges, hotels and outfitter and guiding businesses a chance to give back to their local forests. Guests make voluntary contributions, which the NFF then matches and invests in projects that improve recreation opportunities, watershed health and wildlife habitat on the National Forest where the lodge is located.

In FY 2018, the NFF issued 19 grants to 17 local conservation organizations through these programs. These grants provided support for restoration work on seven National Forest units.



Tree Planting

Supported by individuals, small businesses and large corporations, our tree-planting program generates significant and important results for our National Forests through targeted reforestation efforts. All of our tree-planting projects plant native seedlings on National Forests damaged by wildfire, insects, disease, storms or where ecosystem diversity and forest health have been negatively affected.

In FY 2018, the NFF planted 3,759,000 trees on 22 different National Forests.

“ We will plant 50 million trees in the next five years to restore thousands of acres of wildlife habitat, protect critical watersheds, and provide generations of Americans with healthy, resilient forests.”



STATEMENT OF ACTIVITIES

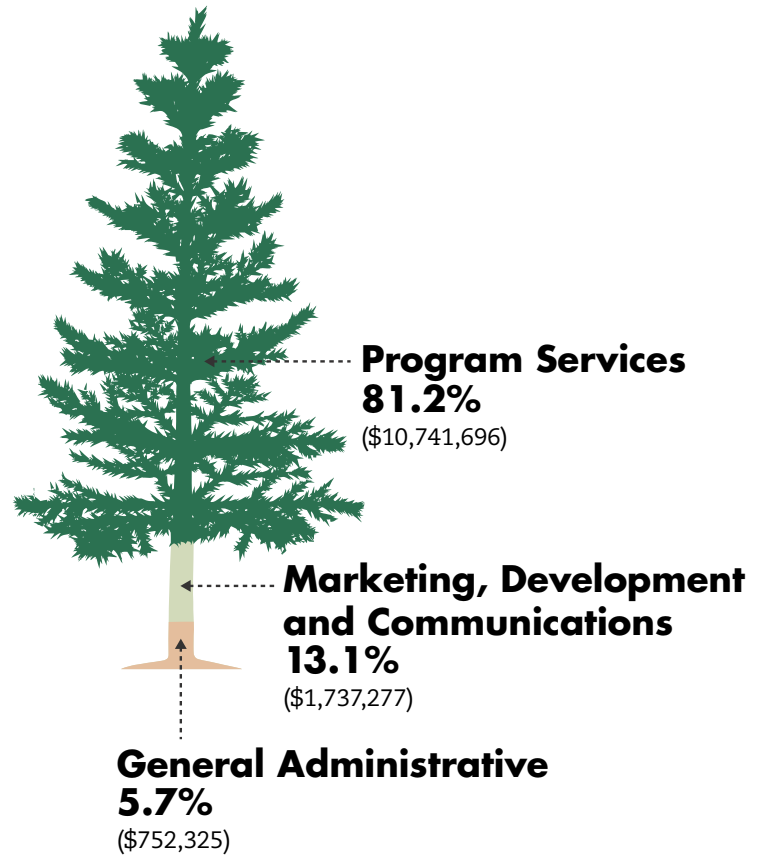
Year Ended September 30, 2018

Support and Revenue

Foundations	\$1,944,866
Corporations	\$4,582,181
Individuals	\$1,146,627
In-Kind.....	\$334,553
US Government Grants.....	\$3,047,601
State and Local Government Grants	\$202,601
Special Events.....	\$1,058,049
Contracts and Reimbursable Grants	\$2,087,957
Other Income.....	\$34,772
Investment Gain (Loss)	\$231,774
Total Support and Revenue	\$14,670,981

Expenses

Program Services.....	\$10,741,696
Marketing, Development and Communications	\$1,737,277
General and Administrative.....	\$752,325
Total Expenses	\$13,231,298



CONSERVATION RESULTS SINCE 2001



186,860
volunteers

70,053 youth engaged or employed
2,406,968 volunteer hours
1,157 equivalent hours in full-time jobs
\$58,097,690 estimated value of volunteer time

18,924
miles of trailwork



17,389
participants in
peer-learning sessions

249 peer-learning sessions
13 capacity-building workshops
1,066 participants at capacity-building workshops



217,222
acres of wildlife habitat
restored or maintained



13,778,502
trees and shrubs planted

1,598,677 acres of fuel reduction
completed or planned
112,912 acres of noxious weeds treated
2,428 projects completed

7,446
miles of stream surveyed or restored



\$212,192,955
total value of conservation
investments*

Total NFF funds invested* \$61,743,414
Total partner-raised funds leveraged* \$150,449,541

Collectively, the NFF issued 186 grants or contracts in FY 2018. Not including tree planting, **we invested \$5,627,913** in federal and private funds, which were leveraged with \$9,144,117 in partner-raised funds for a **total conservation value of \$14,772,031.**

*for completed projects



DONORS

Individuals and Organizations

\$1,000,000+

California Wildlife
Conservation Board
Gordon & Betty Moore

\$100,000 - \$499,999

Arizona Department of
Environmental Quality
Colorado State Trails Program
Joan & Bob Feitler

\$50,000 - \$99,999

City of Scottsdale

\$25,000 - \$49,999

Arizona Game & Fish Department
Belwether Advisors LLC –
David Bell
City of Mesa
City of Glendale
City of Peoria
Craig R. & Barbara M. Barrett
Estate of Kathryn Louise
Sovonick
Mark & Susan Stutzman
Paul & Sonia Jones
Rivers & Mountains Conservancy

\$10,000 - \$24,999

Anonymous
Discover Your Northwest
James & Maggie Hunt
Laura C. Yip
Martha Semmens
Peter Mensch
Sirius Fund
W. Grant & Karen Gregory
Wood River Bicycle Coalition

\$5,000 - \$9,999

Anisia Dugala
Athey Creek Middle School
Caroline Choi
Chad Weiss
Christina Hoyt Vanderlip
David Bezanson
Fredric & Beverly Reichel
Lee Fromson
Madhurasmitha Chakravarthy
Mark & Laura Miles
Mark Rey
Pima Youth Career Connect Project
Randall & Catherine Weisenburger
Robert Cole
The Allyn Foundation, Inc.
Timothy P. & Susan Schieffelin
Town of Crested Butte

\$2,500 - \$4,999

David Sebastian
Forrest Cambell
Janice E. Thompson
Jeff Paro
Jennifer & John Spaith
Jennifer Galbally
Justus O'Brien
Kip Allardt

Mark & Marti Marache
Mark F. Rockefeller
Mary Mitsos
Mary R. Morgan
Michael C. Brown, Jr.
Michael DeNapoli
Nelson A. Rockefeller, Jr.
Patricia Hayling Price
Rouse Family Foundation
Ruth Ann Hyson Clat
Sabine Moeller & Peter Lusk
Sandler O'Neill + Partners
Sascha M. Rockefeller
Steven & Barbara Rockefeller
Trout Unlimited –
Stonefly Society

\$1,000 - \$2,499

Aimée Christensen
Al Webber
Alexander Brash
Alice Godfrey
Allison Kimball
Ann Roberts
Arthur Vale
Austin Dickson
Barry Fingerhut
Bernice Virginia Comella
Betsy & Michael Vitton
Brad Windecker
Brett Alston
Brian & Laura Doehle
Brian Gleeson
Brooks Gilley
Caroline Michiko Kunitake
Catherine Chen
Chris Davis
Chris Feustel
Chrystie Price
Claire & Jeremy Clark
Cole Barash
Daniel Strickler, Jr.
David & Jennifer Evans
Diana Hoff
Elizabeth Anderson
Emily Minnich
Estate of Antonia V. Foote
Evan Martin
Frank Sokola
Girl Scouts of Wisconsin –
Badgerland Council, Inc.
Greg Vital
Heidi Allen
Hugh Switzer
Independent Order of Odd
Fellows Oregon Lodge #3
James Costabile
Jason Talbot
John & Eleanor Sullivan
John Cushman
John Henry Moulton
John P. & Patricia Case
John Raben
John T. Riecker
Jon Owens
June Davidson
Keith Nash
Lawrence DeVan
Mae Davies
Mark Adrian Garcia

Mary Bessesen
Maura Leo
Michael Brown
Michael Zimmerman
Mike & Darlinda Fleitz
Murray & Jeanie Kilgour
Nimesh Bhupendra Shah
Nina Rumbough
Noah Price
Paul & Leslee Chinelli
Paul Hansen
Phil Conte
Ray & Diana Foote
Richard Ahearn
Richard Alper & Kate Herrod
Robert Leary
Rotary District 6990
Ryan Hassick
Sally Myall
Sandra F. Miller
Scott Myers
Sean & Mary Hallissey
Shane Hunter
Stephen Knutson
Steven Shareshian
Susan Fraker
Susan Hairston
The Gardner School
Theodore Ford
Thomas McHenry
Tim Carpenter
Tom Brokaw

\$500 - \$999

Adelman Travel – Employees
Airtech
Alex Neil
Amy Klotz
Andrew Tsao
Anna Higgins
Anne & Joseph Pierson
Barbara & Jim Gunesch
Barbara Young
Betsy Thurlow
Bobbitt Noel
Brent Oberlink
Chris & Tina Norton
Coalition for the Upper South
Platte
Columbian Garden Club
Dan P. McCarthy
Dan Wilson
Daniel Steinberg
David & Jill Hodges
David Rochette
Debra L. Cagan
Desmond Johnston
Devin A. Braun
Dhimiter Marka
Douglas & Susan Brengle
Dustin Mondell
Ellen Kick
Emily Miller
Erica & Charles Channon
Evan & Laura Zasoski
Gavin Harvey
George Hopley
Gregory Kokoskie
Helen Vietor
J.J. McDonald
James Morris

Jason Weisser
Jean Rhee
Jeannie Seidler
Jeff Craun
Jeff Fulmer
Jeffrey Lipper
Jennifer Nolan
Jim Adams
John Gill
Jorge Paris
Joseph Thorstenson
Joshua A Morgan
Joshua Park
Joti & Perdeep Thind
Jourdan Brandt Urbach
Judith A. Greene
Justin Haugh
Katherine Bartlett
Katherine Clinch
Kathy Browne
Katie & Jonathan Simon
Kent Lulich
Kim Alan Lorz
Kristen Bernhard
Larami MacKenzie
Linda & Ray Alberts
Lissa Capps
Liv Kellgren
Marilyn S. Lowe
Mark & Joanne Preston
Mark Andrew Begina
Marta LaRock
Martha Heinze
Matthew Charles Barnett
Megan Bowles
Michael E. Davis
Michael Haverkamp
Michael Steinberg
Miriam Deysi Satterfield
Mr. & Mrs. Hal Sider
Neil Malani
Nick Bindert
Nischal Nagpal
Patrick Husson
Rachel Rofe
Richard Goward
Richard James Teehan
Robert Gootee
Ronald Kuker
Ronald Lloyd
Rosemead High School
Ross Wittenberg
Rotary Foundation – Bellevue OH
Ruth Luko
Ryan Gillespie
Sal Cornetta
Sam Hayman
Scott & Petria Fossil
Shirley Kuebrich Revocable Trust
St. Matthew's Ev. Lutheran Church
Steven & Rebecca Fretty
Steven Bragg
Susanna Bauder
Tamara Jovovic
Tanya Wolff
The Dalles Middle School
Travis & Veronica Lutz
Uli Bilke
Wendy & Carter Wray
William F. Mullen

DONORS

Corporations and Foundations

\$1,000,000+

REI Co-op

\$500,000 - \$999,999

The Vail Corporation

\$100,000 - \$499,999

Anonymous
Busch Beer
Community Foundation of Western Nevada
Gaylord & Dorothy Donnelley Foundation
Grand Victoria Foundation
Intel Corporation
M.J. Murdock Charitable Trust
Meyer Memorial Trust
MinuteKey
Salt River Project
Southern California Edison
Spin Creative Studio
The Coca-Cola Company
The Conservation Fund

\$50,000 - \$99,999

Blooms Today
Blount International, Inc.
Boeing
Bonneville Environmental Foundation
CenterPoint Properties
Freeport-McMoRan Foundation
Harlan and Lois Anderson Family Foundation
Juneau Community Foundation
Lands' End
Ray and Tye Noorda Foundation
Snowbird Corporation
Southwest Airlines and Southwest Airlines Foundation, an advised fund of Silicon Valley Community Foundation
Suzanne and Walter Scott Foundation
Thor Industries

\$25,000 - \$49,999

Clara L.D. Jeffery Charitable Trust
Copper Mountain Inc.
Crown Holdings Inc.
Dominion Energy
Edgerton Foundation
Google, Inc.
Hoffman Construction
John & Maureen Hendricks Charitable Foundation
Kuat Innovations LLC
McCann Worldgroup
MillerCoors
NASCAR
Polaris Industries, Inc.
Ski Apache
The Spurlino Foundation
Universal McCann
WestRock Co.
Weyerhaeuser Family Foundation
Wieden+Kennedy

\$10,000 - \$24,999

Alaska Airlines
America Beverage Association
Anderson-Rogers Foundation
Arca Continental-Coca-Cola Southwest Beverages
Ball Corporation
Blend
Brentwood Home
Bulgroup Properties
Carlson Family Foundation
Carlson Wagonlit Travel
Charles L. Pack Charitable Trust
Coca-Cola Bottling Co. Consolidated
Coca-Cola Beverages Florida
Coca-Cola Bottling Company of Northern New England
Collins Cockrel & Cole
EcoTek Outdoors
Fritz and Adelaide Kauffmann Foundation, Inc.
Freshpet
Great Lakes Coca-Cola Bottling
Heartland Coca-Cola Bottling Company LLC
Hecla Charitable Foundation
Imperial International
Kirkpatrick Family Fund
Lake Quinault Lodge
Lam Research Foundation
LendUS
LexisNexis® Risk Solutions – HPCC Systems®
Liberty Coca-Cola Beverages
Madison Square Garden
Mona B
Natural Resources Group, Inc.
NBC Sports Group
NBCUniversal
New York Mets
NitroFill
Pink Jeep Tours
Purgatory Resort
Reforest'ation
Science Care
Smart Family Foundation of New York
Squire Patton Boggs
Sunriver Resort, LP
Swire Coca-Cola, USA
The Coca-Cola Bottlers' Association
The Crown Family
The Dale Kutnick & Laura Gordon Kutnick Foundation, Inc.
The Forestland Group
The Monsanto Company
The Richard K. and Shirley S. Hemingway Foundation
The Seeley Foundation
Triple Creek Ranch
U.S. Bank
Veterinary Specialty Center
White & Case LLP
Wyndham Grand Rio Mar Puerto Rico

\$5,000 - \$9,999

A Living Tribute
Alberton Railroad Day Foundation
Arapahoe Basin Ski Area
Atlas Services LLC
atmosfair
Ayudar Foundation
Bain & Company
Betteridge Jewelers
Brookstone Homes, LLC
Caudalie USA
Diana Davis Spencer Foundation
Dr. Scholl Foundation
Edison Electric Institute
Filson
Footprints
Grand Trunk
Hood River Distillers
HyLite LED Lighting
KEEN
Logikcull
Mars Foundation
McKinstry
Mitchell Gold + Bob Williams
Monarch Mountain
Punchery
Patagonia Cerveza
Phaxio
Phipps Reporting, Inc.
Plant Memorial Tree
Robbins Brothers
Santa Fe Natural Tobacco Company
Selective Insurance Company of America
Sevan Multi-Site Solutions
Skaggs Foundation
Steans Family Foundation
Stryker Sustainability Solutions
Sun Mountain Lumber
Tala
Ten Mile River Preserve Inc.

\$2,500 - \$4,999

Bizible
Black & Veatch
Cambia Health Solutions Fund of The Oregon Community Foundation
Cornelia Cogswell Rossi Foundation, Inc.
Gateway Canyons Resort
Globe International
Greenwich Country Club
Jackson Hole Resort Lodging
Kreiss Family Foundation
Lamb Foundation
Marmoset
New Belgium Brewing
New Hampshire Charitable Foundation
Organifi
Portland General Electric
The Capital Group Companies Charitable Foundation in honor of Dana Schwerman
The Charles Delmar Foundation

The Van Wyck Estate
Village and Wild
Wall Street Greetings, LLC

\$1,000 - \$2,499

14er Brewing Company
A to Z Wineworks
Anonymous
Bank of America Charitable Foundation
Bear Wood Windows, Inc.
Bountiful Giving Tree
Busch Systems
Charter Charitable Foundation
Continental Underwriters, Inc.
Cooper Spur Mountain Resort
Deca Energy
Eagle Rock Brewery
Ecolab
ESCO Corporation
Evergreen Enterprises
Feetures! brand
Foot Traffic
Foundation For The Carolinas
Gehan Homes, Ltd.
GlenArbor Golf Club
Gunderson Dettmer Stough
Villeneuve Franklin & Hachigian, LLP
Harris Tea
Harvest Partners Financial
HE Travel
HITT Contracting, Inc.
J. Pocker & Sons
James Cooke & Hobson, Inc.
Jax Tree Removal
Jeffrey Crosby
JP Morgan Asset Management
Kitchen Cabinet Depot
Leon & George
LRS Architects, Inc.
Major League Soccer
Morgan Stanley
Mt. Hood Meadows
National Shooting Sports Foundation, Inc.
National Ski Areas Association
New Balance Athletics, Inc.
NEXT List
Nike
NMG Aerospace
Northeast Mountaineering
Oak Industries LLC
Osprey Packs Inc.
Pawling Mountain Club
Planters
Red Bull North America
Repairxpert
Roundup Riders of the Rockies
Heritage and Trails Foundation
Samuel A. Ramirez & Co., Inc.
Schlafly – The Saint Louis Brewery™

(continues next page)

NATIONAL FOREST FOUNDATION

Donors (continued)

Scout Books
Shade Metals
Simms Fishing Products
Sollars Home
SproutVideo
Studio Ma
Sugar Bowl
Sweet of Oregon – Nagoya, Japan
System76, Inc.
TARC Construction, Inc.
Techno Brain LLC
The Africa Center
The Bailey Foundation
The Greenbrier Companies
The Pepi Family's Jonas Brothers Studios of New York
The Standard
Timberline Lodge
Treepex
VibesUP, Inc.
WATERAX
Wells Fargo
Weston Snowboards
Window Fix, Inc.
Wine By Joe, LLC
Woodwudy Wholesale Flooring
Yoga Pod
Zen Aerobics

\$500 - \$999

Arbor Creek Outfitters
Bargreen Ellingson
BBC Motorsports
Bluebird Apparel
Bluetree Network
Cascade Vacation Rentals
City Winery
Colovos Family Charitable Foundation
DLR Group
Durbin & Greenbrier Valley Railroad Garden & Library
Gather Restaurant
Green Earth Goodies/Supplies
Lehn & Vogt Insurance Group
Mailchimp
Metro West Women's Club
MGC Pure Chemicals America, Inc.
Michelle Dillon Photography
Movers Specialty Service (MSS)
Mozéu Socks
Ninkasi Brewing Company
Open Farm
Rocky Mountain Recreation
Skamania Lodge
SOLitude Lake Management
Spruce Salon LLC
The Study Fine Wine & Spirits
Twilight Productions
We Love Trees, LLC
Whole Body Apothecary
Yeti Coolers
ZEAL Optics

Board of Directors

Chair—Craig R. Barrett
Retired CEO/Chairman of the Board, Intel Corporation (AZ)

Treasurer—Lee Fromson
Executive Vice President, Products & Operations, Simms Fishing Products (MT)

Secretary—Timothy P. Schieffelin
Founding Partner, Leeward Group (CT)

Executive Committee Members

Caroline Choi, *Senior Vice President, Corporate Affairs, Southern California Edison (CA)*

Peter Foreman, *Sirius LP (IL)*

Robert Cole, *Partner, Collins Cockrel & Cole, P.C. (CO)*

Board Members

Michael Barkin, *CFO, Vail Resorts Management Company (CO)*

Mike Brown, Jr., *Founder and Managing Partner, Bowery Capital (NY)*

Coleman Burke, *President, Waterfront Properties (NY)*

Aimée Christensen, *CEO, Christensen Global Strategies; Founding Executive Director, Sun Valley Institute (ID)*

Vicki Christiansen, *Ex-Officio, Chief, USDA Forest Service (DC)*

Bart Eberwein, *Executive Vice President, Hoffman Construction Company (OR)*

Barry Fingerhut, *CEO/Owner, Certification Partners, LLC (AZ)*

Roje S. Goozee, *Co-Owner & Manager, Rush Creek Ranch, LLC (OR)*

James K. Hunt (WY)

Andie MacDowell, *Actress & Spokesperson (CA)*

Thomas McHenry, *President & Dean, Vermont Law School (VT)*

Jeff Paro (NJ)

Patricia Hayling Price, *President, LiveWorkStrategize, LLC (NY)*

Chad Weiss, *Managing Director, JOG Capital Inc. (WY)*

Bob Wheeler, *President and CEO, Airstream Inc. (OH)*

Staff, Board of Directors and National Forest Leadership Council lists current as of January, 2019.

National Forest Leadership Council

Chair—Bernie Weingardt,
U.S. Forest Service, Retired (CO)

Kathleen Atkinson
Regional Forester, Eastern Region, U.S. Forest Service (WI)

Doug Crandall
Director of Legislative Affairs, U.S. Forest Service (DC)

Brian Ferebee
Regional Forester, Rocky Mountain Region U.S. Forest Service (CO)

Scott Fossil (WY)

Russell Fraker
Attorney, Beverage & Diamond P.C. (MD)

W. Grant Gregory, Sr.
Chairman, Gregory & Hoenemeyer, Inc. (CT)

Spencer Haber
Chairman & CEO, H/2 Capital Partners (CT)

David E. McIntyre
Vice President, Retired, Westvaco Corporation (SC)

Randy Moore
Regional Forester, Pacific Southwest Region, U.S. Forest Service (CA)

Beth Pendleton (AK)

Randy Peterson
Principal, LRP Consultants, LLC (WI)

Leslie Weldon
Senior Executive Work Environment, U.S. Forest Service (DC)







nationalforests.org
Building 27, Suite 3
Fort Missoula Road
Missoula, MT 59804

Staff

President—Mary Mitsos

Executive Vice President—Ray A. Foote

Vice President, Field Programs—
Marcus Selig

Shereé Bombard
Director, Administration

Zoe Bommarito
Communications Associate

Rebecca Davidson
Director, Southern Rockies Region

Sarah Di Vitorrio
California Program Manager

Karen DiBari
Director, Conservation Connect

Hannah Ettema
Communications Manager

Dania Gutierrez
Southern California Program Manager

Robin Hill
Controller

Ben Irely
Conservation Connect Program Manager

Beth Krueger
Grants and Contracts Coordinator

Adam Liljeblad
Director, Conservation Awards

NFF Offices

- Seattle, Washington
- Portland, Oregon
- South Lake Tahoe, California
- Los Angeles, California
- Phoenix, Arizona
- Flagstaff, Arizona
- Salida, Colorado
- Denver, Colorado
- Missoula, Montana
- Asheville, North Carolina
- Washington D.C
- Hailey, Idaho

Kerry Morse
Conservations Programs Officer

Luba Mullen
Associate Director, Development

Emily Olsen
Colorado Program Manager

Marlee Ostheimer
Philanthropy & Partnerships Coordinator

Monica Perez-Watkins
Tree Planting Coordinator

Spencer Plumb
Arizona Program Manager

Evan Ritzinger
California Program Associate

Patrick Shannon
Director, Pacific Northwest Program

Dani Southard
Northern Rockies Program Manager

Emily Struss
Event Planner & Coordinator

Mark Shelley
Director, Eastern Region

Deborah Snyder
Development Services Manager

Wes Swaffar
Director, Reforestation & Partnerships

Dayle Wallien
Director, Conservation Partnerships