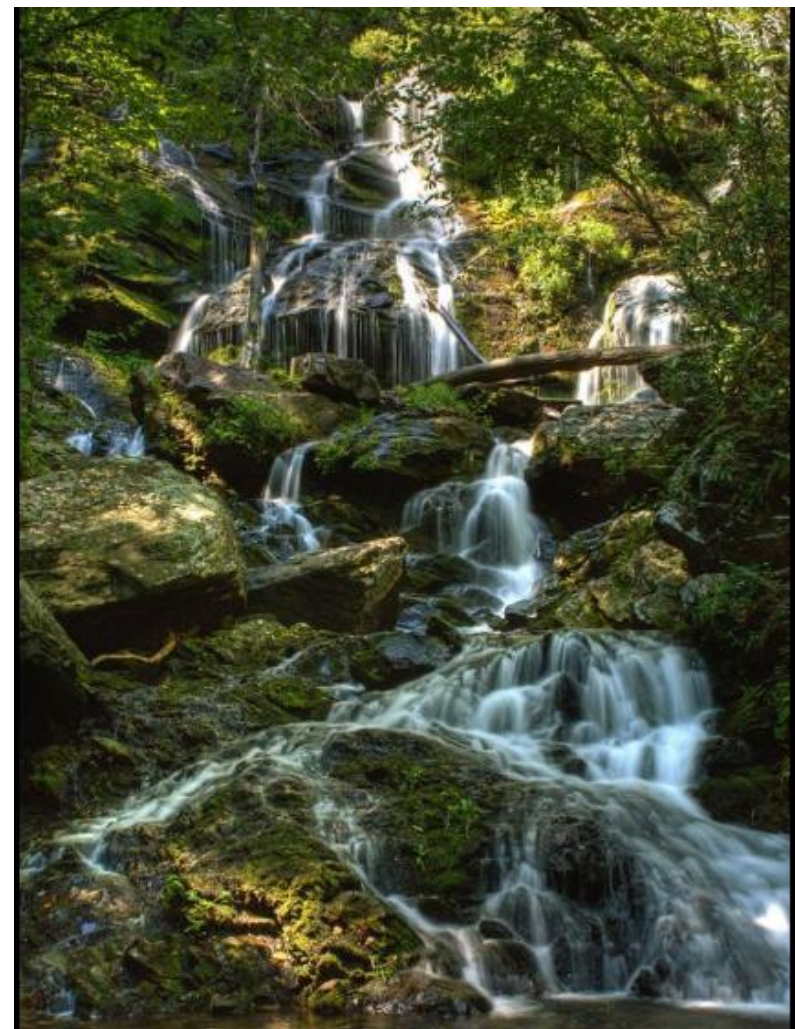


Places matter.



Management Areas and Geographic Areas



Stakeholders Forum, November 1, 2016

Where we left off...

- June mapping data meeting
- August Open IDT meetings around MAs, beginning on the Grandfather
 - Frontcountry
 - Midcountry
 - Backcountry
 - Other Management Areas
- Planned in Aug and Sept: open IDT discussions around conflicting values between FS layers, NAPs and WHAMAs
- What happened?



Improved Plan Construct

- Forestwide
- Geographic Areas
- Management Areas

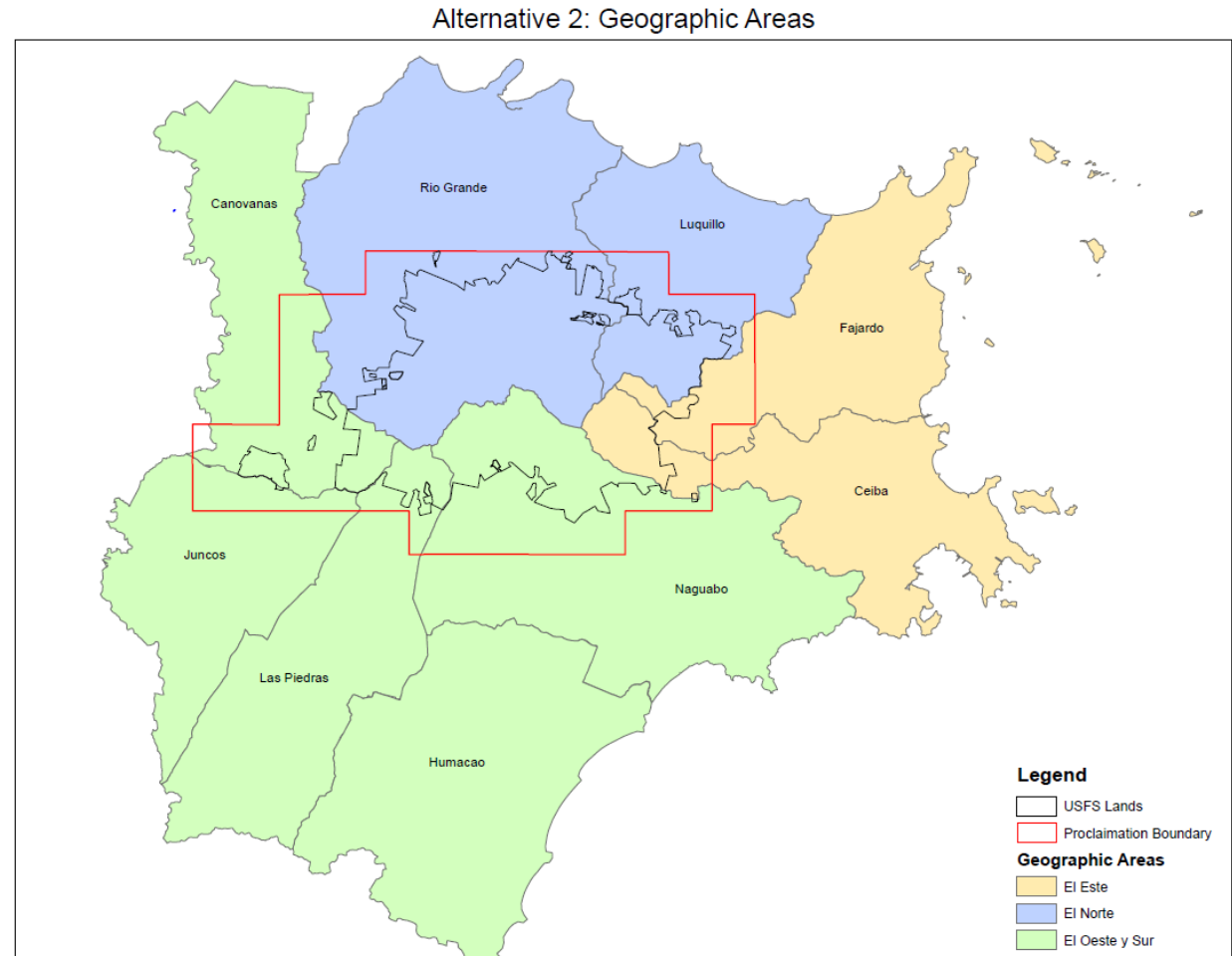


Improved Plan Construct- Example

- Forestwide
- Geographic Areas
- Management Areas

Many contemporary NFS plans have a geographic area approach

Example: El Yunque NF →

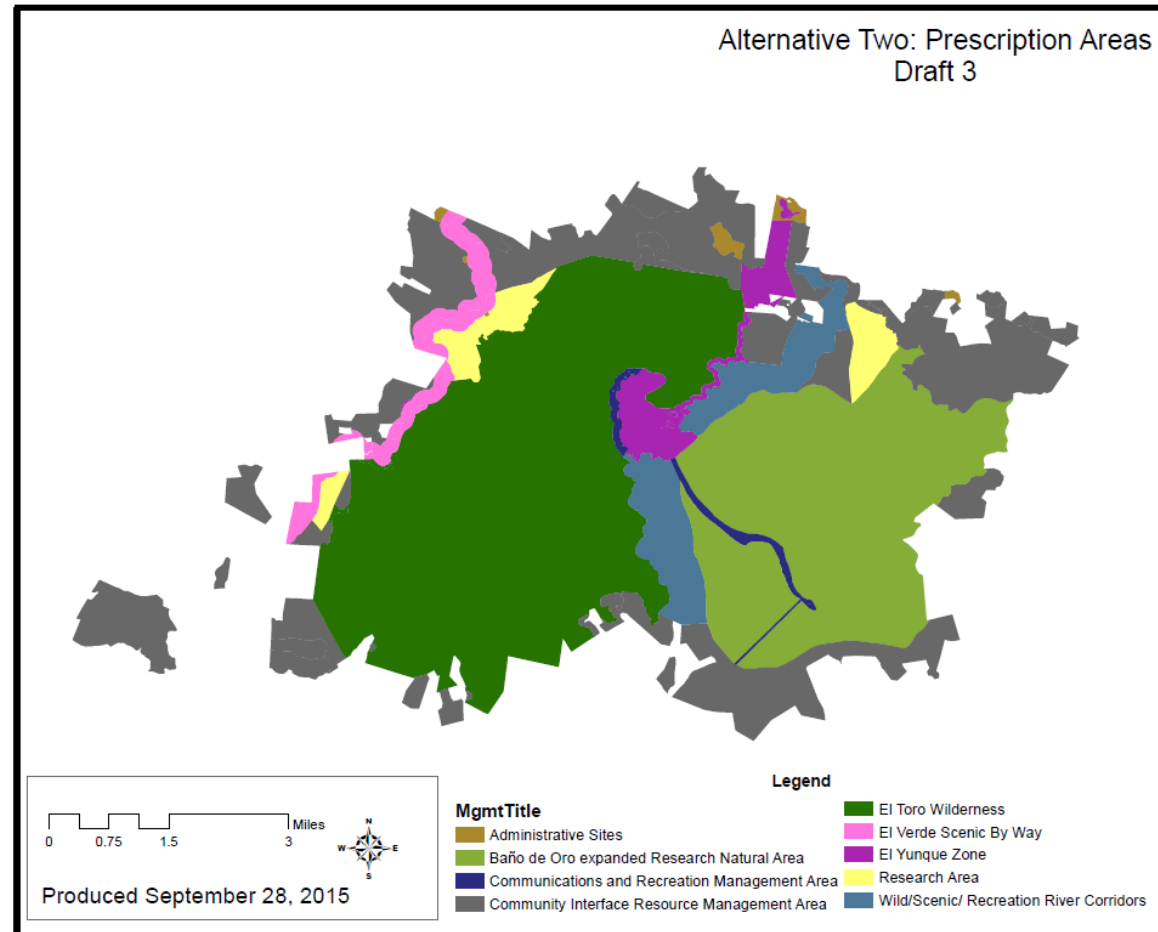


Improved Plan Construct- Example

- Forestwide
- Geographic Areas
- Management Areas

Many contemporary NFS plans have a geographic area approach

Example: El Yunque NF →



Forestwide

- Currently 24 separate sections; will be regrouped into 3 integrated themes.
- Contains the bulk of the desired conditions, objectives, standards and guides that need to be considered everywhere across the forest.

Forest Plan Under Construction



PLAN UNDER CONSTRUCTION



Desired Conditions, Standards and Guidelines, by individual topic

Geological Resources (Updated Mar. 21, 2016)

Soils (Updated Feb. 26, 2016)

Water (Updated May 9, 2016)

Air (Updated Feb. 26, 2016)

Climate (Updated Feb. 29, 2016)

Aquatic Systems (including wildlife) (Updated Feb. 9, 2016)

Streamside Zones (including wildlife) (Updated May 9, 2016)

Terrestrial Ecozones (including wildlife) (Updated Feb. 9, 2016)

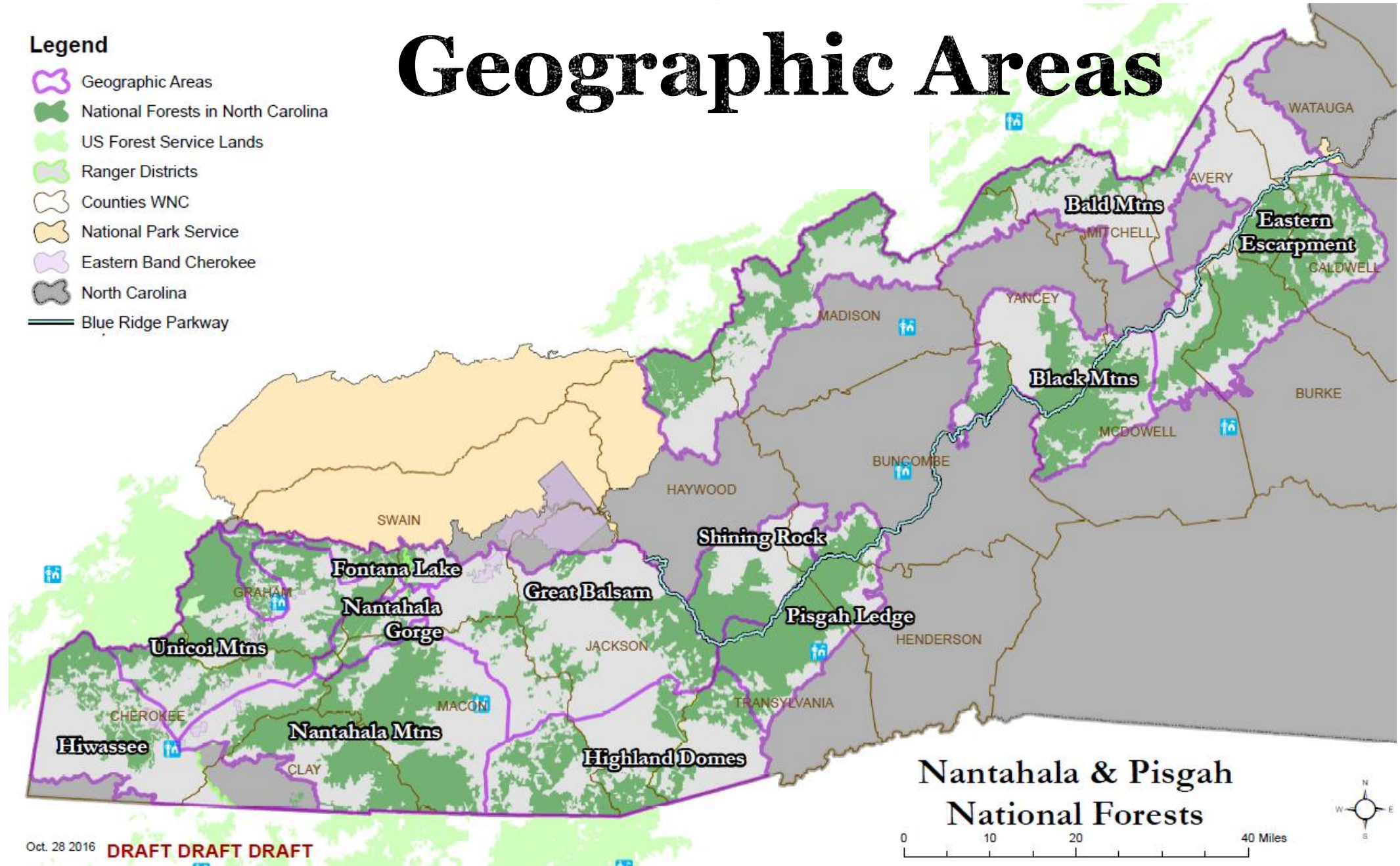
Rare Habitats (including wildlife) (Updated Mar. 22, 2016)



Geographic Areas

Legend

- Geographic Areas
- National Forests in North Carolina
- US Forest Service Lands
- Ranger Districts
- Counties WNC
- National Park Service
- Eastern Band Cherokee
- North Carolina
- Blue Ridge Parkway

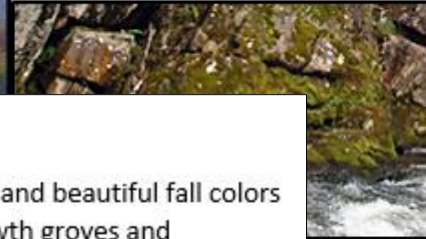


Geographic Areas

Boundaries drawn by landscape character, dependent on geologic, hydrologic and ecologic features, as well as recreational experiences and connections to nearby communities

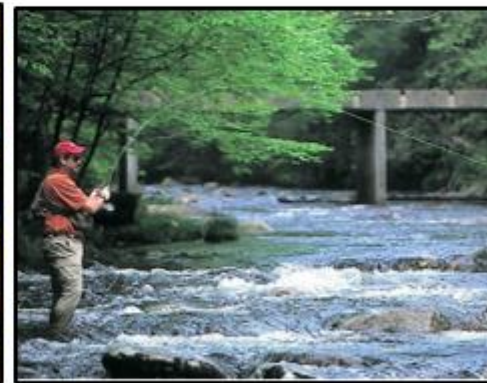
Nantahala Gorge

The internationally known Nantahala River carves a deep, rugged river gorge through tall mountains. The fast-moving and rocky river draws thousands of boaters and on-lookers each year.



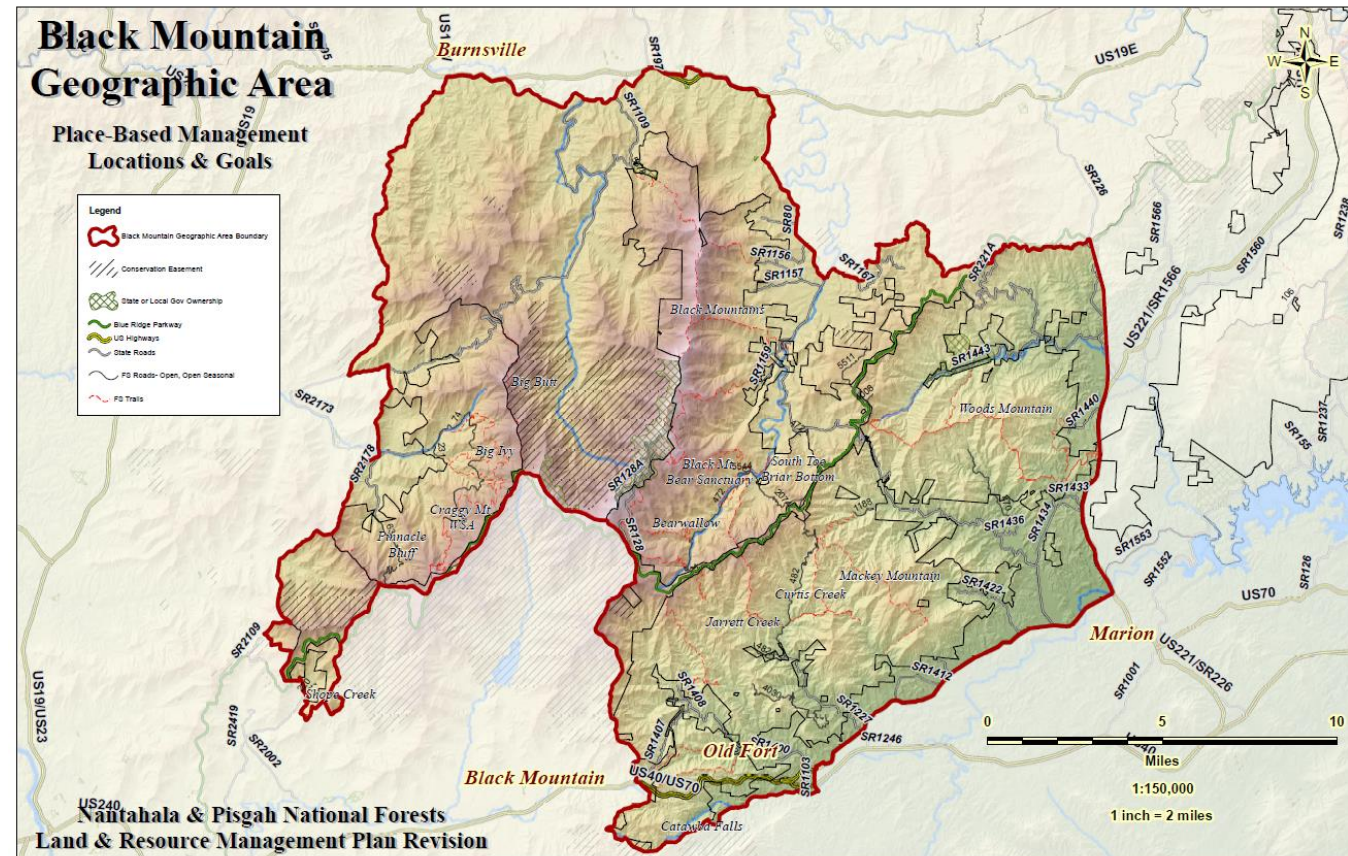
Unicoi Mountains

Long-range views of layered mountains reward visitors with classic Smoky Mountain landscapes and beautiful fall colors of the hardwood forests. Remote settings create unique opportunities, such as hiking in old growth groves and backcountry fishing and hunting.



Mockup: Black Mountains GA

- We started on the Grandfather first because that had been the intent during the MA meetings.
- Key facets of the template:
 - Description
 - Goals
- What we are still working on



Vegetation management priority areas

- Priority places for vegetation management over the life of the plan
 - NOT project boundaries - larger than that
 - Focus areas where we think our large landscape veg management restoration work will take place
 - Informed by FS analysis of departure, operability, input from the public (WHAMAs, NAPs), and an intent to contribute to the economic vitality of western NC communities
 - Will be updated during the 10 year review of the Plan.
- Why not calling these “restoration priority areas?”
 - Because some restoration work, like fire and invasive species treatment, is desired to take place outside of these areas
 - We have separate “priority watersheds” for aquatic and riparian work.



Vegetation management priority areas (cont)

- How will these areas be identified?
 - We're working on this now
 - We are considering a collection of factors
 - Ecosystem departure
 - Operability
 - Input we've received from the public (including WHAMAs and NAPs)
 - Economic considerations to provide contributions to local economies



How many? How big? Are these part of the GA or is this an MA?

We're working on it.

We do know that these areas may cross other MA boundaries (*more on this later*) and the extent and total number of these areas may vary by alternative.



Other Forest Management Areas



Interface

-Corridors that are primary access for visitors

-**Greatest opportunity for motorized & road accessible recreation**

-Veg management such as to achieve small canopy gaps, woodlands



Matrix

-Extensive area connecting mix of young, mid, & old habitats maintained over time

-**Managed for a variety of opening sizes (diverse structure)**

-Moderately secluded rec. opportunities.



Backcountry

-Most remote and least roaded

-**Recreation opportunities relative freedom from the sights and sounds of modern man.**

-Primarily shaped by natural processes.



Special Interest Areas & Other MAs

(Wilderness, Experimental Forests, Cradle of Forestry, Appalachian Trail, etc)



Other Forest Management Areas



Interface

-Corridors that a

opport
motorized
accessible
recreation

-Veg management
such as to achieve
small canopy gaps,
woodlands



Vegetation
management
priority areas
(cross MAs, primarily in
the matrix)

(cross MAs, primarily in
the matrix)



erately
secluded rec.
opportunities.



Backcountry

-Most remote and
least roaded

-Recreation
opportunities
relati

ights and
sounds of modern
man.

-Primarily shaped
by natural
processes.



Special Interest Areas & Other MAs

Wilderness,
Experimental
Forests, Cradle
of Forestry,
Appalachian
Trail, etc)



NAPS and WHAMAs: Where did they go?



We are still working on this.

Compared to the plan structure, we had in August, we now have a better construct for addressing underlying values associated with these areas. **NAPs and WHAMAs will influence vegetation priorities areas and MA boundaries.**

NAPS

- Backcountry MA
- Special Interest Areas
- Matrix
- Less so in interface

WHAMAs

- Primarily in the Matrix & Interface
- Less in backcountry



Next steps

How does the Stakeholders Forum want to engage?

- Nov, Dec 2016
 - Districts developing Geographic Area content
 - IDT applying Forest Leadership Team (Steering Team) criteria for developing priority veg areas
 - IDT re-examining NAPs and WHAMAs layer to make sure we have considered these in our proposed management area lines and geographic area priorities
- Jan
 - Step back, review swwhere we landed as a landscape
- February 2017:
 - Open IDT meetings on each zone to look at the geographic areas collectively at a landscape
 - Discussions with local governments about these areas





Questions?