

Request for Proposals
Deadman Mesa Mastication Project
Tonto National Forest, Arizona

Background and Statement of Work: The Tonto National Forest offers year-round recreational activities including hiking, backpacking, horseback riding, non-motorized boating, fishing, rock climbing, camping and picnicking. Past management practices and fire exclusion have altered the forest structure and function, resulting in increased fuel loading. Current conditions elevate the risk of unnaturally high severity wildfire, threatening the ecological integrity of forests and riparian systems.

The National Forest Foundation (NFF) has partnered with the Tonto National Forest, Arizona Department of Forestry and Fire Management, Arizona Game and Fish Department, Salt River Project, and Rocky Mountain Elk Foundation to implement forest fuel reduction activities. Treatment objectives include mechanical mastication of juniper, Arizona white oak, and Emory oak, and all brush species to 1. Create a structure that more closely resembles the structure that existed prior to interruption of the historic fire regime (open juniper woodland/grassland, large diameter junipers, decreased shrub cover, abundance of native grasses); 2. Reduce the risk of catastrophic, stand-replacing wildfire by decreasing tree densities, ladder fuels, and crown continuity; 3. Create conditions conducive to the reintroduction of low to moderate severity fire; and 4. Maintain pinyon pine.

In addition to wildlife conservation values, the project will directly protect the Wildland Urban Interface communities of Pine, Strawberry and Randall Place. Deadman Mesa is located directly southwest of these three communities and, due to its current overgrown conditions, is at significant risk of severe wildfire.

Site Description

Deadman Mesa consists of a mixture of pinyon juniper woodland along slopes and ridges and juniper grasslands in the plains. Dominant species include Utah juniper and pinyon pine. Other species present include Gambel oak, alligator juniper, one-seed juniper, and shrub live oak. Total basal areas vary greatly and range from approximately 40 to 100 ft² per acre, with an average of approximately 60 ft² per acre. The unit is overstocked with Utah juniper less than 20 inches Diameter Root Collar (DRC). Regeneration consists of mainly pinyon pine and Utah juniper. Dominant ground cover varies throughout the unit. Basalt cobble and rock fields are common throughout the project area. Bare ground is common in areas where tree canopy cover is high. Portions of the unit contain a high canopy cover of manzanita and shrub live oak. Areas with less tree canopy cover contain prickly pear, mountain mahogany, skunk bush, snakeweed, and an abundance of grasses, including blue grama, side oats grama, squirrel tail, and snakeweed. Elevation ranges from 5,200 to 5,800 ft. Aspect is variable. Slopes of approximately 35% noted along some hill slopes and ridges. Numerous cattle tanks are

scattered throughout the project area. The Fossil Creek Trailhead and a gravel pit are located near the northeastern part of the project area.

The eastern half of Unit 000103 received a fuel break cutting treatment in 2008, creating an evenly spaced single-storied juniper grassland averaging 40 ft² of basal area. The western half of Unit 000103 along with portions of Units 400089 and 400090 consisting of 700 acres surrounding Gus Tank were thinned via mastication in 2017 and are excluded from this prescription.

Information Requested

If interested in submitting a bid for this project, please provide a proposal for the above statement of work by providing:

- technical approach
- work experience
- cost
- capacity for this project
- experience in similar projects

Specific requirements are detailed below.

I. PROJECT OVERVIEW AND REQUIREMENTS

General Specifications

- (a) Description of Work – This Request for Proposals is for restoration services related to mechanical mastication and hand thinning; including the following:
1. Masticate all juniper greater than 1 foot tall and less than 20 inches DRC in a leave tree arrangement in groups of 6 to 8 trees per group with 20 to 30 foot spacing between leave trees and 130 to 150 foot spacing between tree groups.
 2. Within groups, spacing of juniper may be variable. The distance from one tree to the next tree may range from 20 to 30 feet (measures drip line to drip line).
 3. Leave the best available juniper with the best tree form, health, and vigor, relative to other adjacent trees.
 4. Leave all juniper > 20 inches DRC
 5. In hand thin areas, all material shall be lopped or masticated so that the height of slash material is less than or equal to 2 feet.
 6. Leave tree groups may also contain oak and pinyon pine. These tree species will be included in the 6 to 8 trees per group.
 7. Leave all riparian tree and shrub species that may be encountered (such as Arizona sycamore, willow, Arizona walnut, alder, maple, and chokecherry).
 8. Leave all pinyon pine, ponderosa pine, and Gambel oak, regardless of size.
 9. Arizona white oak and Emory oak less than 6 inches DRC will be masticated.
 10. Leave all dead Arizona white oak and Emory oak greater than or equal to 6 inches DRC. All dead Arizona white oak and Emory oak less than 6 inches DRC will be masticated.
 11. All brush species associated with the chaparral vegetation type will be masticated.

The Contractor shall identify what they can supply in terms of materials, labor, equipment, supplies, supervision, quality control, and incidentals required to complete the work described. The Contractor shall perform all work in a safe and conscientious manner.

- (b) Project Location – The unit is located west of Strawberry, Gila County, Arizona. From Payson, AZ, travel north on Arizona State Highway 87 to Strawberry. Turn onto Fossil Creek Road. Proceed west approximately 4 miles to Forest Road 708. See map of unit (Appendix A).
- (c) Work Schedule – Work may begin at any time, upon agreement signature, receipt and approval of the contractor’s operating plan, and completion of a pre-work conference. Preferred start date is by June 2024. Work should be completed by December 31, 2025.

Other Project Requirements and Specifications

- (a) Utilities – In many locations there will be no or limited sanitation, water, electrical or housing services available. The Contractor shall make its own arrangements for temporary facilities if needed.
- (b) Specifications – Project work shall be accomplished in accordance with the following:
 - Work and machinery shall be confined within project boundaries as indicated on the Project Area Map in Appendix A.
 - Mastication and hand thinning treatment shall follow the general specifications and details provided in the Detailed Information Sheet in Appendix B.
 - Contractors shall adhere to Equipment Specifications and Tonto National Forest Fire Plan as described in Appendix C.
 - Contractor shall follow the Tonto National Forest Industrial Fire Plan in Appendix C.
 - All work shall be in accordance with all project appendices and other applicable local, state and/or federal regulation.

Insurance Requirements

Upon selection of the winning bid, the Contractor agrees that it has and shall maintain the following insurance coverage indicated below. The effective date of all coverage shall precede the start of any work.

- a. State minimum workers’ compensation insurance coverage for its employees, if any.
- b. Broad form general liability, property damage, and automotive liability insurance in the minimum amount of \$1,000,000 for bodily injury, death, or damage to property of any person and \$2,000,000 for bodily injury, death, or damage to property of more than one person. The Contractor shall name NFF an Additional Named Insured and provide NFF with a certificate of insurance evidencing such coverages, prior to the initiation of the Scope of Services.
- c. If the Scope of Services includes professional services as identified herein, Contractor shall also provide professional errors and omissions liability insurance. Professional services for purposes of this section include, but are not limited to performing architecture, engineering, landscape architecture, land surveying or

planning, preparation and signing or stamping of drawings, maps, surveys or construction specifications, or design and development of computer software, programs or websites by the Contractor or by subcontractors on behalf of the Contractor, for which professional liability insurance would typically be required. The minimum coverage limits required are \$1,000,000 for each claim and \$1,000,000 annual aggregate.

Prohibited Telecommunications Services and Equipment

The Contractor is responsible for compliance with the prohibition on certain telecommunications and video surveillance services or equipment identified in 2 CFR 200.216.

Payment/Performance Security

Contractor shall post cash, a letter of credit, bond, or other financial security that is easily convertible into cash in a form acceptable to the NFF, in its sole determination, to assure completion of the work required under any subsequent agreement and payment of all amounts lawfully due to all persons supplying or furnishing to the Contractor or Contractor's subcontractors with labor, laborers, materials, rental machinery, tools or equipment used or to perform the work. Contractor may incorporate required associated costs into mobilization costs or other approved expenses.

- a. Work that is classified as construction in accordance with the Miller Act or Little Miller Act or if required per conditions of the funding source, payment and performance bonding will be required in the full amount of any Agreement. For the purposes of this Request for Proposal, construction is defined as "any contract greater than \$100,000 for the construction, alteration, or repair of any public building or public work where the federal government is the owner", or
- b. If Contractor is not self-performing at least 85% of the total contract value or if the cost of materials is in excess of the larger of \$100,000 or 50% of the contract total, payment and performance bonding will be required in the full amount of the agreement, or
- c. If the value of the agreement is in excess of \$250,000, Contractor will be required to post financial security in a form acceptable to the NFF in the amount of 5% of the total agreement value up to \$250,000 in total financial security.

American Made Products. The work associated with this RFP is subject to Build America, Buy America Act. P.L. 117-58, Secs 70911-70917, and as such, domestic content procurement preference requires all iron and steel, manufactured products and construction materials used within the scope of this Agreement, be produced in the United States.

Federal Exclusion Verification

The selected Contractor will be required to affirm that neither it nor its principals are presently debarred, suspended, proposed for debarment, declared ineligible, or voluntarily excluded from participation in this transaction by any Federal department or agency.

Federal Flowdown Provisions

Flowdown Requirements: Any Agreement associated with this RFP is subject to flowdown requirements under associated federal or state funding agreements, which are included and made part of by this reference and Appendix D.

II. REQUIRED COMPONENTS

Technical Proposal

Please provide a detailed technical approach to the work.

Contractor Qualifications

- I. Past Experience – Please provide a brief explanation of previous work experience with land management agencies.
- II. References – Please provide three professional references that can speak to past performance.

Pricing Schedule

Contractor shall price work according to the schedule below. Prevailing wages are required per conditions of funding sources.

	Task/Item	Units	Quantity	Unit Cost	Extended Cost
(a)	Mobilization cost	Lump Sum	1		
(b)	Mastication treatment	acres	2701		
(c)	Hand thin treatment	acres	477		
				Total Bid	

III. SUBMISSION, EVALUATION, AND CONTACTS

Contractor Selection Process

This is a request for proposals only and bids furnished are not offers from the National Forest Foundation. This request does not commit the National Forest Foundation to pay any costs incurred in the preparation or submission of the proposal or to contract for supplies or services.

The NFF will use the Evaluation Factors below to review each submitted bid. Based on the outcomes of that selection process, the NFF will notify successful and unsuccessful bidders by May 10, 2024 and will prepare a separate contract document.

Evaluation Factors and Relative Importance

The following criteria will be used in the evaluation of submitted proposals, ordered from highest weighting (level 3) to lowest weighting (level 1).

Level 3 Criteria

- Price / cost
- Equipment and contractor capability
- Timing of when contractor can begin and/or finish the project
- Past performance, references, and USFS feedback

Level 2 Criteria

- Technical proposal / proposed approach to project
- Overall strategic benefits to meeting NFF goals and grant needs, requirements, and timelines

Level 1 Criteria

- Benefits to the local community
- Relationship to local community

Point of Contact

Please submit any questions about the project in writing to the Point of Contact.

Shannon Smith
National Forest Foundation, Tonto Stewardship Coordinator
ssmith@nationalforests.org

Responses will be shared with known interested parties by email or otherwise posted at <https://www.nationalforests.org/rfp>.

Bid Submission

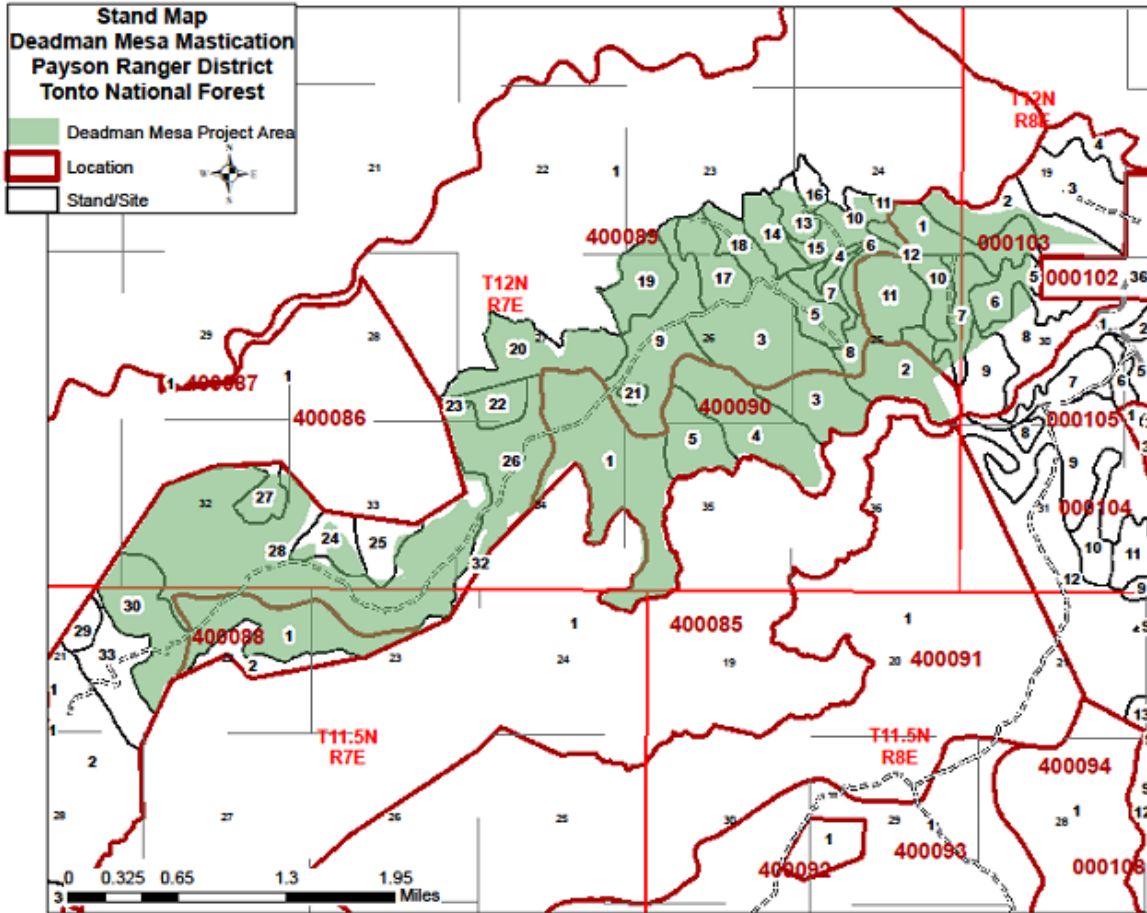
Potential bidders are highly encouraged to attend the on-site pre-bid tour on May 1, 2024. Contractors interested in attending must RSVP to Shannon Smith (ssmith@nationalforests.org) by April 29, 2024.

Submit bids via email to ssmith@nationalforests.org by May 17, 2024.

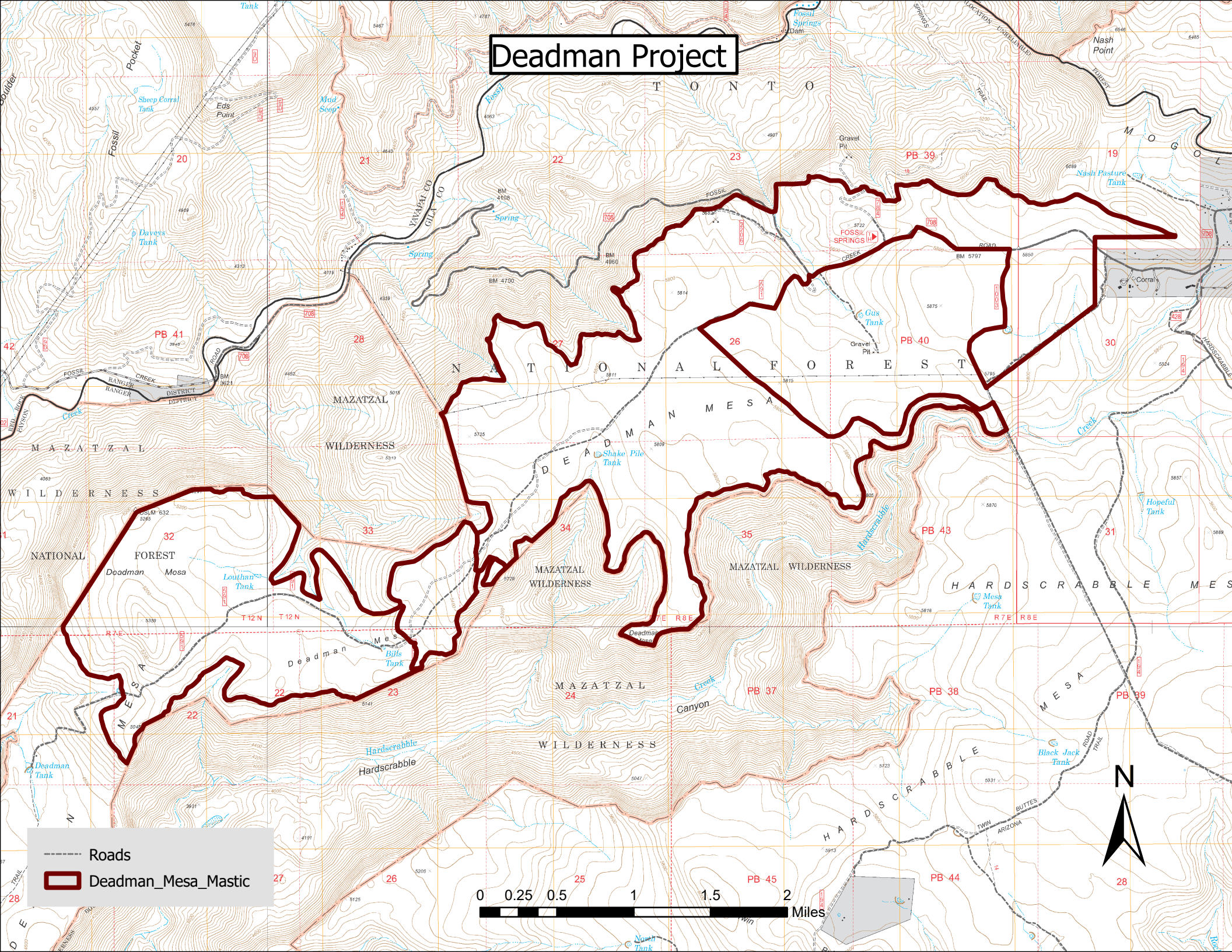
Equal Opportunity Provider

In accordance with Federal law and U.S. Department of Agriculture policy, the National Forest Foundation is prohibited from discriminating on the basis of race, color, national origin, sex, age, religion, political beliefs, or disability.

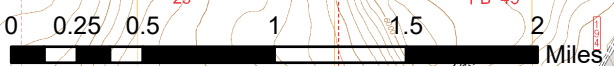
APPENDIX A: PROJECT AREA MAPS



Deadman Project



----- Roads
Deadman_Mesa_Mastic



APPENDIX B: DETAILED INFORMATION SHEET

Implementation Instructions:

1. Grind all juniper greater than 1 foot tall and less than 20 inches Diameter Root Collar (DRC) in a leave tree arrangement in groups of 6 to 8 trees per group with 20 to 30 foot spacing between leave trees and 130 to 150 foot spacing between tree groups.
2. Leave all juniper > 20 inches DRC
3. Leave tree groups may also contain oak and pinyon pine. These tree species will be included in the 6 to 8 trees per group.
4. Leave all riparian tree and shrub species that may be encountered (such as Arizona sycamore, willow, Arizona walnut, alder, maple, and chokecherry).
5. Leave all pinyon pine, regardless of size.
6. Leave any ponderosa pine encountered, regardless of size.
7. Leave all Gambel oak encountered, regardless of size.
8. Leave all live Arizona white oak and Emory oak greater than or equal to 6 inches DRC. All live Arizona white oak and Emory oak less than 6 inches DRC will be masticated.
9. Leave all dead Arizona white oak and Emory oak greater than or equal to 6 inches DRC. All dead Arizona white oak and Emory oak less than 6 inches DRC will be masticated.
10. Leave the best available juniper with the best tree form, health, and vigor, relative to other adjacent trees.
11. Within groups, spacing of juniper may be variable. The distance from one tree to the next tree may range from 20 to 30 feet (measures drip line to drip line).
12. All brush species associated with the chaparral vegetation type will be masticated.

Special Considerations within Unit:

Harvesting Operations

1. Do not masticate juniper if it will cause damage to a leave tree.
2. Protect pinyon pine regeneration and Gambel oak from damage during mastication operations when possible.
3. Portions of the unit contains steep and/or rocky slopes. Mastication will need to be deferred within these areas.

Slash Treatment: All activity slash will be lopped or masticated so that the height of slash material is less than or equal to 2 feet.

APPENDIX C: EQUIPMENT SPECIFICATIONS AND TONTON NATIONAL FOREST FIRE PLAN

Equipment Requirements:

Chainsaws

The Contractor shall provide dependable, safe equipment and protective gear that meets all applicable state and federal laws and regulations relating to motor vehicles and equipment. The Government reserves the right to conduct inspections at any time.

Any fueling or refueling of a powersaw shall only be done in an area which has first been cleared or is free of all material capable of carrying fire; powersaw shall be moved at least 10 feet from place of fueling before starting.

Spark Arrestors

The NFF/third-party contractor shall not operate any internal combustion engine on any timber, brush or grass covered land, including trails or roads without a spark arrestor maintained in effective working order and meeting the guidelines set forth in the National Wildfire Coordinating Group Publication NFES 1363 and 2363.

Personal Protective Equipment

Personal protective equipment for eyes, face, head, and extremities shall be provided, used, and maintained in a sanitary and reliable condition. The Contractor shall provide to each employee who operates a chain saw, chain saw chaps and assure the chaps are worn during saw operations. These chaps must be approved by Underwriters Laboratory or meet Forest Service specification 6170-47. The chaps shall cover the full length of the thigh to the top of the boot on each leg.

Work may be suspended or modified when the Coronado National Forest personnel identifies conditions that represent an unacceptably high fire risk, such as very dry fuels, high winds, increased incidence of wildfires, erratic fire behavior, or Red Flag conditions.

Equipment

The FS has requested the use of tracked machines with boom mounted masticator only.

Fueling

The location of equipment service areas and gas and oil storage areas shall be approved in writing by the permit administrator. All areas shall be cleared of brush, litter, grass, or other flammable debris for a radius of 50 feet.

Hazardous Materials

Compliance with all applicable State and Federal regulations pertaining to the handling and disposal of hazardous materials. Disposal of hazardous materials is not permitted on site or on federal land. Failure to meet this condition can result in the NFF/third-party contractor being liable for the cost of reclamation, including clean up and disposal of contaminated soil.

Minor, incidental leaks from fittings, seals or ruptured hoses will not subject the NFF/third-party contractor to remedial requirements; however, continued leaks will require repair to eliminate/minimize the impact of hazardous materials. Maintenance and repairs that require the draining of lubricants or other fluids may be conducted on site only if the fluids are captured, containerized, and removed from public lands for proper disposal.

Contractor will submit a spill plan prior to startup of operations detailing how spills will be avoided and procedures that will be followed if a spill occurs.

Tonto National Forest Fire Plan

The Contractor shall be responsible for the cost of suppressing all fires caused by his operation, and for all damage to any property of the USDA Forest Service or third parties. The USDA Forest Service reserves the right to participate in extinguishing any fires caused by the contractor's operations and the contractor shall reimburse the USDA Forest Service for the cost of all suppression activities ordered or directed by the USDA Forest Service. The following requirements are a part of this solicitation and any resultant contract.

1. *Fire Prevention* - During periods of contract performance, fire requirements shall be met by the contractor.

2. Execution of Fire Plan

- a. Forest Service personnel involved will, in all cases, coordinate through the Contracting Officer's Representative (COR) except in cases of emergency or Forest closure.
- b. The contractor shall designate a fire plan representative who shall be responsible for executing and carrying out the fire requirements.
- c. The contractor shall include the fire requirements in all subcontracts.
- d. The contractor shall assure that all contract employees are informed of the existence and conditions of the fire requirements.

3. Compliance Inspection

- a. Inspection by the Forest Service will be made to ensure compliance with the fire requirements.
- b. Should any deficiencies appear during the inspection, the contractor will be informed, and the deficiencies shall be corrected within 24 hours. Activities with the potential to start fires shall be halted until the deficiencies are corrected and the corrections approved by the COR.
- c. The contractor's fire plan representative shall make daily inspections to ensure that the terms of the fire requirements are met at all times.

4. Fire Pre-suppression Requirements

a. Fire Toolbox -

(1) During contract performance, the contractor shall furnish and maintain, at the contractor's expense, one fire toolbox at the campsite or some central location, as long as it is within 1/4 mile of the location where the contractor is currently performing work.

(2) The fire toolbox is to be maintained with tools in good condition in the following quantities for each five people in the contractor's work force. The equipment is for the sole purpose of firefighting. Four shovels, two axes, one Pulaski and five each 1-gallon canteens. Where needed, brush hooks and McLeod tools may be substituted for shovels or axes.

(3) The fire toolbox shall be replenished by the contractor after each incidence of fire use.

b. Work Hours - The contractor shall restrict operations in accordance with the following emergency fire precaution schedule unless the COR waives the requirement in writing. Each day of operation when there is a predicted change in the fire precaution plan, the Forest Service will inform the contractor between 3 and 6 p.m. MST (4 and 7 p.m. MDT). Notification will be made of the alphabetical industrial fire precaution plan (Exhibit 1) to be followed the next day within the local operating area. No later than 9 a.m. MST (10 a.m. MDT) the following day, the Forest Service will inform the contractor of any change in the fire precaution schedule.

c. Blasting - Use of caps and safety fuse detonators for blasting is not permitted during periods when fire precaution plan C or D is in effect. A fire guard shall be required in accordance with the enclosed emergency fire precaution schedule. This individual, when required, shall remain on duty for at least 1 hour after blasting is finished. Minimum equipment shall consist of a round-pointed, size 0 or larger shovel and a 3-to-5-gallon backpack pump filled with water. Blasting hours are restricted under fire precaution plan C, and blasting is prohibited under fire precaution plan D.

d. Welding - An area commensurate with the amount of welding to be accomplished shall be cleared before welding operations are started. Written permission must be obtained from the COR during fire precaution plan B, C and D. As a minimum, a 3-to-5-gallon backpack pump filled with water is to be available in addition to the vehicle fire extinguisher. The area in the immediate vicinity of the operation shall be wet down before and after operations. The area adjacent to the welding operations shall be thoroughly checked for fires for 1 hour after welding.

e. Fire Guard - The contractor shall designate at least one representative to train and supervise each work crew in fire prevention, detection, and suppression.

To prevent, detect, and suppress fires, the contractor shall provide a trained fire guard for projects involving internal combustion engines. The fireguard shall perform guard duties during operating hours. The fireguard may perform contract work in conjunction with fire guard duties.

Each fireguard shall report all fires and take suppression action on any fire that starts on the project area. Each fireguard shall be equipped with a vehicle and a fire tool cache consisting of a fire cache box, two size 0 shovels, two Pulaskis, two McLeod tools, and two 4-to-5-gallon backpack pumps filled with water. All equipment and tools shall be maintained in serviceable condition.

5. Fire Suppression

a. The contractor shall take independent action on the suppression of all fires in the work area or vicinity. Vicinity is defined as a 1/4-mile extension from the operations area boundary.

b. All Forest fires shall be reported to the District Ranger's Office as soon as possible. Even though the fire has been suppressed by the contractor's crew, this report is required. The office and telephone number to which fires shall be reported will be furnished to the contractor prior to start of contract work.

6. Equipment Requirements

a. All gasoline and diesel equipment (except turbocharged) used on the project shall be equipped with spark arresters approved in the Spark Arrester Guide, USDA Forest Service, June 1983.

b. All internal combustion engines must be inspected before use on the job and periodically thereafter by the Forest Service. Equipment not passing inspection cannot be used until repairs are made.

c. Serviceable baffled mufflers with standard exhaust tailpipes are considered adequate on trucks, pickups, and sedans.

d. Equipment service areas and gas and oil storage areas shall be cleared of brush, litter, debris, and grass for a radius of at least 50 feet.

e. Each piece of motorized equipment not included in item f below shall be equipped with a round-pointed shovel and fire extinguisher.

f. Fuel trucks, service trucks, and the work camp shall be equipped with a shovel, DB axe, and class ABC pressurized chemical fire extinguisher of not less than 15 pounds capacity by weight.

The shovels and fire extinguishers are in addition to those required for the toolbox (4.a.). These shall be furnished and maintained at the contractor's expense.

g. All crawler tractors and rubber-tired equipment suitable for fire suppression work shall be prepared for nighttime use by mounting of brackets for portable, self-contained, battery-operated lights, provided by the Forest Service.

h. Power saws shall be kept in a safe, serviceable condition at all times. Each power saw shall be equipped with an approved spark arrester/muffler system meeting the SAE J-335b standard.

(1) The refueling of power saws shall be done on mineral soil and the saw shall be moved at least 10 feet from the point of refueling to another barren spot before being started.

(2) Power saws with warm or hot spark arresters/mufflers (running or not) shall not be placed or rested on sawdust piles, litter duff, stumps or spots that are easily ignited.

(3) Each power saw shall be accompanied by one round pointed shovel in good condition and a metal fuel-safety can. One chemical pressurized fire extinguisher, 8 ounces or larger, is to be always kept with the power saw operator while working on the project. The shovel is to be kept with the fuel supply.

7. Smoking and Fires

a. Smoking

(1) No smoking shall be allowed while traveling, except on surfaced highways. A surfaced highway is any road that is oiled, graveled or otherwise paved.

(2) Smoking is not permitted while working. Smoking is only permitted on breaks in areas having a clearing of at least 3 feet in diameter to bare soil.

b. Fires - No warming, burning of debris, or cooking fires shall be permitted during periods of high or above fire danger except in designated places or by written permission.

8. Violations

a. Violations of the smoking regulations (36 CFR 261.52(a)(c)(d)) and fire requirement will result in criminal action against the violator. The contractor shall advise all employees of this regulation.

b. Violation or deficiencies of fire requirements shall result in immediate suspension of operations until the deficiency or violation is corrected. Repetitive violations will be grounds for default termination.

9. Historical Data - The following data on the Forest area involved is to be provided for the contractor's information. The data will be based on records for the past 10 years.

Total fire season March 1 to November 15

Average number of days of Plan A: 102

Average number of days of Plan B: 12

Average number of days of Plan C: 7

Average number of days of Plan D: 30

EMERGENCY FIRE PRECAUTION SCHEDULE

Predicted Manning Class for the Fire Danger Rating Area	Industrial Fire Precaution Plan
0,1,2	A
3	B
4	C
5	D
Area closure proclaimed by the Forest Supervisor or Regional Forester.	D
Fire Precaution Plan	Description
A	Normal fire precautions. No Fireguard required.
B	Designated areas for smoking, warming, and cooking fires require a written permit. Contractor shall provide fireguard unless relieved of this responsibility in writing by the COR.
C	Shutdown from 12 noon until 8 p.m. MST (1-9 p.m. MDT) of all machine treated slash, blasting, welding, metal cutting, and clearing. No smoking, warming, or cooking fires permitted at any time. Powersaws shall be shut down from 9 a.m. until 8 p.m. MST (10:00 a.m. to 9 p.m. MDT). Operations on mineral soil involving road excavation, watering, grading, surfacing, rock crushing and/or other equipment maintenance may continue.

Appendix D

NFF Funding Code: 1596042

NFF Funding Name: SA SPA Deadman Mesa Mastication

Funder Agreement ID: 22-SA-11031200-217

Flowdown Provisions

U.S. FOREST SERVICE ACKNOWLEDGED IN PUBLICATIONS, AUDIOVISUALS AND ELECTRONIC MEDIA.

Award Recipient or Contractor shall acknowledge U.S. Forest Service support in any publications, audiovisuals, and electronic media developed as a result of this agreement.

COPYRIGHTING.

Award Recipient or Contractor is granted sole and exclusive right to copyright any publications developed as a result of this agreement. This includes the right to publish and vend throughout the world in any language and in all media and forms, in whole or in part, for the full term of copyright and all renewals thereof in accordance with this agreement. No original text or graphics produced and submitted by the U.S. Forest Service must be copyrighted. The U.S. Forest Service reserves a royalty-free, nonexclusive, and irrevocable right to reproduce, publish, or otherwise use, and to authorize others to use the work for Federal Government purposes. This right must be transferred to any sub-agreements or subcontracts.

This provision includes:

- The copyright in any work developed by Award Recipient or Contractor under this agreement.
- Any right of copyright to which Award Recipient or Contractor purchase(s) ownership with any Federal contributions.

TONTO NATIONAL FOREST INDUSTRIAL FIRE PRECAUTIONS PLAN GUIDELINES FOR AUTHORIZED USERS

The purpose of fire restrictions and industrial fire precautions is to reduce the risk of human-caused fires. The Industrial Fire Precautions Plan Guidelines and its associated fire precautionary measures must be followed year round. The intent of this guide is to provide authorized users with the information they need to ensure their operations conform to the standards and requirements outlined within this document. For the purpose of this plan, authorized users include any permit holder, lease, contractor, subcontractor and other user, engaged in permitted operations on Tonto National Forest Lands.

When operating on Tonto National Forest Lands, it is incumbent on the permitted user to know the current Emergency Fire Precaution Schedule and to take the appropriate actions to meet the mitigation measures in these guidelines. In addition, it is also incumbent on the authorized user to inform any and all of their subordinates (contractors, sub-contractors, etc...) of these precautions and to ensure that all requirements are being met.

At all times, users shall have a plan of action which briefly states what preventative measures will be taken to mitigate fire occurrence. Users should clearly designate a fireguard and what actions will be taken should a fire occur, including the notification process.

8.2.1 GENERAL FIRE PRECAUTIONARY MEASURES

8.2.2 COMMUNICATIONS

Authorized users shall ensure a serviceable telephone, radio-telephone or radio communication system is available to provide prompt and reliable communications between the authorized user's operations and the Tonto National Forest. In the event of a wildland fire ignition, users shall contact **Phoenix Dispatch – (480) 457-1555**.

8.2.3 FIRE GUARDS

To prevent, detect, and suppress wildland fire, authorized users shall provide a fire guard at each operational area where power-driven equipment, powered tools, and other restricted operations have taken place during the day. The fire guards shall constantly perform their duties during operating hours and for one hour after the work stops for the day, when the Fire Precaution Plan is Plan “**B**”, “**C**”, or “**D**”. **They must be able to communicate a fire start within 15 minutes of detection to Phoenix Dispatch.**

A fire guard on one operating area shall satisfy the requirements on adjacent areas if the travel time with available transportation is not in excess of ten (10) minutes to any of the other areas requiring such service and provided the fire guard patrols all area where authorized user's activities occurred. Each fire guard shall be vigilant, able and prepared to take actions to prevent, detect, and report any wildland fires. Additionally, they need to promptly take suppression action with available required firefighting equipment and personnel on any wildland fire that starts on project area.

8.2.4 FOR CONTRACTORS

Each fire guard shall be equipped with a vehicle and a fire tool cache consisting of a cache box with a complement of ten fire tools maintained in serviceable condition. Approved firefighting tools may include the following: Pulaski, McLeod, long handled round pointed shovel, fire rake, combi-tool or rhino tool. The fire guard will also carry at least 300 gallons of water with a pump capable of sustaining a minimum pressure of 100 psi and a flow rate of 15 gallons per minute. They must equip the system with 200 feet of 1-inch hose on a reel and a nozzle capable of both straight and fog pattern for firefighting purposes.

On smaller operations where only one type of activity, that is covered by this plan, occurring a fire guard and appropriate tools is addressed in each section.

8.2.5 FIRE TOOLS FOR CONTRACTORS

Authorized users shall furnish and maintain, in good working order, fire tools to be used only for suppressing wildland fires. Each contractor shall provide one firefighting tool per person to equip all personnel engaged in authorized user's operations. Approved firefighting tools may include the following: Pulaski, McLeod tool, long handled shovel, combi-tool or rhino tool. Additionally, 2 five-gallon backpack pumps or similar container that can spray water shall be available and full of water.

8.2.6 FIRE TOOLS FOR PERMITEES

Authorized users shall furnish and maintain, in good working order, fire tools to be used only for suppressing wildland fires. Each permittee shall provide one firefighting tool per person to equip all personnel engaged in authorized user's operations. Approved firefighting tools may include the following: Pulaski, McLeod tool, long handled shovel, combi-tool or rhino tool.

Additionally, 2 five-gallon backpack pumps or similar container that can spray water shall be available and full of water

8.2.7 FIRE TOOLS ON EQUIPMENT

Passenger carrying vehicles, including light pickup trucks and ATV's/UTV's, shall be equipped with one (1) long-handled round pointed shovel and one (1) ABC dry chemical fire extinguisher not less than 2 1/2 pounds capacity. Each internal combustion fuel carrying piece of equipment (dump truck, dozer, excavator, backhoe, etc...) shall be equipped with one long-handled round-pointed shovel, and one 5-pound capacity ABC dry chemical fire extinguisher. Shovels and fire extinguishers shall be so mounted as to be readily reached from the ground.

8.2.8 SPARK ARRESTERS AND MUFFLERS

Authorized user will ensure that each internal combustion engine shall be equipped with a spark arrester qualified and rated under USDA Forest Service Standard (Spark Arrester Guide) 5100-lb or the latest revision of Society of Automotive Engineers "medium size engine, SAE recommended practice J350" unless it is:

Equipped with a turbine-driven exhaust supercharger such as the turbocharger. There shall be no exhaust bypass.

A multi-position engine, such as on chain saws, weed eaters, brush cutters, hedge trimmers, and cut-off saws purchased after 6/30/78, must meet the performance levels set forth in the "SAE recommended practice J335B" as now or hereafter amended. Those purchased prior to the above date shall be equipped with an approved spark arrester/muffler containing a 0.023 inch mesh screen in good condition.

A passenger carrying vehicle or light truck, or medium truck up to 40,000 GVW, used on roads and equipped with a factory designed muffler and an exhaust system in good working condition. A heavy duty truck, such as a dump truck, or other vehicle used for commercial hauling, used only on roads and equipped with a factory designed muffler and with a vertical stack exhaust system extending above the cab.

Exhaust equipment described in this Subsection, including spark arresters and mufflers, shall be properly installed and constantly maintained in serviceable condition and not modified in any manner.

8.2.9 POWERED HAND TOOLS

During periods of use, each powered hand tool operator shall have readily available for use, one longhandled round-pointed shovel and one chemical-pressurized ABC dry chemical fire extinguisher of not less than 8-ounce capacity by weight. Muffler, extinguisher, and shovel shall be maintained in good working order at all times. Fueling or refueling of a powered hand tool shall be done in an area which has been completely cleared of material which will carry fire at least 10 feet from the point of operation.

8.2.10 BURNING OF REFUSE

No slash or other debris, such as that resulting from clearing on right-of-way, shall be burned without the written consent of the Tonto National Forest.

8.2.11 BLASTING

Use of caps and safety fuse detonators for blasting is not permitted during periods when fire precaution plan C or D is in effect. Minimum equipment shall consist of a long-handled round-

pointed shovel and a 5 gallon backpack pump or larger portable tank with pump filled with water. Blasting hours are restricted under fire precaution plan C, and blasting is prohibited under fire precaution plan D.

8.2.12 GAS OIL STORAGE AND SERVICE AREAS

The location of equipment service areas and gas and oil storage areas shall be approved in writing by the permit administrator. All areas shall be cleared of brush, litter, grass or other flammable debris for a radius of 50 feet.

8.2.13 WELDING

An area commensurate with the amount of welding to be accomplished shall be cleared before welding operations are started at a minimum 10 feet of ground will be cleared of all flammable materials. Written permission must be obtained from the COR/Permit Administrator during fire precaution plan B, C and D. As a minimum, three – 5-gallon backpack pumps (or other tank capable of spraying water) filled with water is to be available in addition to the vehicle fire extinguisher. The area in the immediate vicinity of the operation shall be wet down before and after operations. The area adjacent to the welding operations shall be thoroughly checked for fires for 1 hour after welding.

8.3 SPECIFIC FIRE PRECAUTIONARY MEASURES

EMERGENCY FIRE PRECAUTION SCHEDULE	
FIRE RESTRICTION/CLOSURE “STAGE”	
“STAGED” RESTRICTION LEVELS	INDUSTRIAL FIRE PRECAUTION PLAN LEVEL
NO RESTRICTIONS	A
STAGE I	B
STAGE II	C
STAGE III PARTIAL FOREST CLOSURE **	C/D
STAGE IV FOREST CLOSURE	D
RED FLAG WARNING (Issued by National Weather Service)	D

**** Partial Forest Closure:**

Project areas which are outside the boundaries of the partial forest closure may continue to operate under Industrial Fire Precaution Plan C operating criteria as agreed upon between the Permit Administrator and Purchaser in writing.

Project areas within the boundaries of the proclaimed partial forest closure area are to operate under Industrial Fire Precaution Plan D.

Staged restriction levels are determined by the appropriate Forest Line Officer in consultation with the Forest Fire Management Officer and Contract/Permit Administrator. The appropriate Forest Line Officer may adjust the predicted Industrial Fire Precaution Plan for local weather conditions within a Project Area. Changes in the predicted Industrial Fire Precaution Plan shall be agreed to in writing.

8.4 INDUSTRIAL FIRE PRECAUTION PLAN – DESCRIPTION

Authorized user will restrict operations in accordance with the attached Emergency Fire

Precaution Schedule:

A - Normal Fire Precautions - No fire guard required except for welding and blasting operations.

B - Normal Fire Precautions – Authorized user will provide fire guard.

C - All power equipment use as well as blasting, welding, and metal cutting operations will shut down from 9:00 am until 8:00 pm Mountain Standard Time. Operations on mineral soil involving activities such as road excavation, watering, grading, surfacing, rock crushing, and/or other equipment maintenance may continue. Authorized user will provide fire guard.

D - Shutdown all operations; except operations on mineral soil involving road excavation, watering, grading, gravel surfacing, and rock crushing may continue with special Forest Service permit. Blasting and welding are prohibited. Authorized user will provide fire guard.

8.5 RED FLAG WARNING

A red flag warning is issued when the combination of dry fuels and weather conditions support extreme fire danger. Red flag warnings are issued by the National Weather Service for land and fire managers to highlight the increased fire danger.

- RED FLAG WARNING is issued if conditions are occurring or will occur within the next 24 hours that would support extreme fire danger.

When a Red Flag Warning is issued by the National Weather Service, all authorized user operations will adhere to Industrial Fire Precaution Plan “**D**” and will shut down operations until the Red Flag Warning is rescinded.