

**West Sedona Designated Dispersed Camping Boulder Moving Project  
Request for Quote  
Coconino Forest, Arizona**

**Background and Statement of Work:** The National Forest Foundation is assisting the Coconino Forest, Red Rock Ranger District in addressing unmanaged recreation in the West Sedona area by establishing defined areas for day and overnight use. The project area has experienced a significant increase in unmanaged dispersed camping, increased littering, inappropriate sanitation, and natural resource damage, with up to 250 groups camping along road corridors. The selected bidder will use boulders available from a nearby quarry and in some cases already on-site to better delineate authorized camping area boundaries and to close-off unauthorized areas. Work will include placing up to 3,125 feet of boulders total across 22 sites along an approximately 20 mile stretch of Forest Road west of Sedona, Arizona, in accordance with the General Specifications and Other Project Requirements below.

**Information Requested**

If interested in this project, please provide a quote for the above statement of work by providing approach, work experience, and cost. Please also include your capacity for this project and efficiency in rock moving projects in the past, if any.

This is a request for quotes only and quotations furnished are not offers. This request does not commit the National Forest Foundation to pay any costs incurred in the preparation of submission of the quotation or to contract for supplies or services.

**General Specifications**

- (a) Description of Work – This Request for Quotes is for moving rock related to delineating authorized camping areas and closing off unauthorized areas, including the following:
1. Delineate authorized camping and day use areas at 5 sites along an approximately 15 mile stretch of FR 525 West of Sedona and block off unauthorized areas at 17 sites along an approximately 20 mile stretch of FR 252 and FR 89B West of Sedona, AZ. About 1,750 feet of needed boulder placement is expected in total across the 21 sites.
  2. Optional item: Place 1,375 feet of boulders at the junction of FR 9570 and FR 9570A to delineate authorized roadway

See Attachment A for specific site locations and feet of boulder work per site. See Attachment B and C for maps.

The Contractor shall identify which efforts and materials they can supply in terms of materials, labor, equipment, supplies, supervision, quality control, and incidentals required to complete the work described. The Contractor shall perform all work in a safe and conscientious manner.

(b) Project Location - West Sedona, Arizona

(c) Work Schedule - Desired start is by August 1, 2022

### Pricing Schedule

Contactors shall price work according to the schedule below.

Description	Unit	Unit Cost	Quantity	Total Cost
<b>Complete Campground Delineation and Closure Boulder Placement</b>	1			
<b>Optional Item: Rockview Boulder Work</b>	1			

### Other Project Requirements and Specifications

(a) Utilities – In many locations there will be no or limited sanitation, water, electrical or housing services available. The Contractor shall make its own arrangements for temporary facilities if needed.

(b) Specifications – Project work shall be accomplished in accordance with the following:

- Contractor will not need to provide rock materials from other sources. When rock is not already available on-site, it can be accessed from a quarry located in the project area at FR 525C. Boulders accessed from the quarry will need to be sorted and loaded with a large excavator and trucked to the sites along the 525 and 89B roads.
- Boulders shall be placed no more than 3 ft apart, and should be approximately 24 inches length or greater
- At each site, Coconino National Forest staff will mark the beginning and ending of areas where boulders will be placed using flagging and/or spray paint
- Specific GPS points and area specifications are detailed in Attachment A: Project Site Details
- Locations of the proposed work are detailed in Attachment B: Map of Campground Delineation and Closure Boulder Placement Sites
- Location and layout of optional item are detailed in Attachment C: Map of Optional Item, Rockview Boulders
- Contractor shall follow Coconino National Forest Industrial Fire Precautions Plan Guidelines for Authorized Users as outlined in Attachment D

### Contractor Qualifications

(a) Past Experience – Please provide a brief explanation of previous work experience with land management agencies.

## **Insurance Requirements**

Upon selection of the winning bid, chosen contractor will be asked to affirm that it has and shall maintain State minimum workers' compensation insurance coverage for its employees, if any. The selected contractor shall also maintain broad form general liability, property damage, and automotive liability insurance in the minimum amount of \$1,000,000 for bodily injury, death, or damage to property of any person and \$2,000,000 for bodily injury, death, or damage to property of more than one person. The Contractor shall name NFF an Additional Named Insured and provide NFF with documentation evidencing such coverages.

## **Quote Submission**

Submit bids via email to Sasha Stortz, Arizona Program Manager, [ssortz@nationalforests.org](mailto:ssortz@nationalforests.org) by July 22, 2022.

## **Contractor Selection Process**

The NFF will use the Evaluation Factors below to review each submitted bid. Based on the outcomes of that selection process, the NFF will notify successful and unsuccessful bidders by July 31, 2022 and will prepare a separate contract document.

- Price
- Previous Work History

## **Point of Contact**

For questions about the details of producing the bid, please contact:

Sasha Stortz  
National Forest Foundation, Arizona Program Manager  
928.961.0318  
[ssortz@nationalforests.org](mailto:ssortz@nationalforests.org)

## Attachment A: Project Site Details

1. Delineate authorized camping and day use areas at 5 sites along an approximately 15 mile stretch of FR 525 West of Sedona. Project areas are listed from North to South, see maps in Attachment B. Lengths are approximate.

- (a) **Nolan Site (34°52'50.9"N ; 111°54'43.9"W)(West Side)**. Place boulders just before west loop to close area and delineate turn around. Boulders can be sourced from excess at nearby Block off 15 site.
- (b) **Day Use 5 (34°52'57.33"N ; 111°54'28.9"W)(East Side)**. Boulders sourced from project quarry.
- (c) **Greasy Spoon Site (34°52'34.1"N ; 111°54'18.5"W)(East Side)**. Delineate approximately 560 ft. of boulders. Approx. 89 boulders needed. Combo of using existing boulders and new boulders.
- (d) **Day Use 4 (34°50'57.4"N ; 111°54'54.9"W)(East Side)**. Use on-site boulders to clean up boulder alignment.
- (e) **Cockscomb Site (34°52'4.5"N ; 111°54'13.2"W)(East Side)** Use on-site boulders to clean up boulder alignment.

2. Block off unauthorized areas at 17 sites along an approximately 20 mile stretch of FR 252 and FR 89B West of Sedona, AZ. Project areas are listed from North to South, see maps in Attachment B. Lengths are approximate.

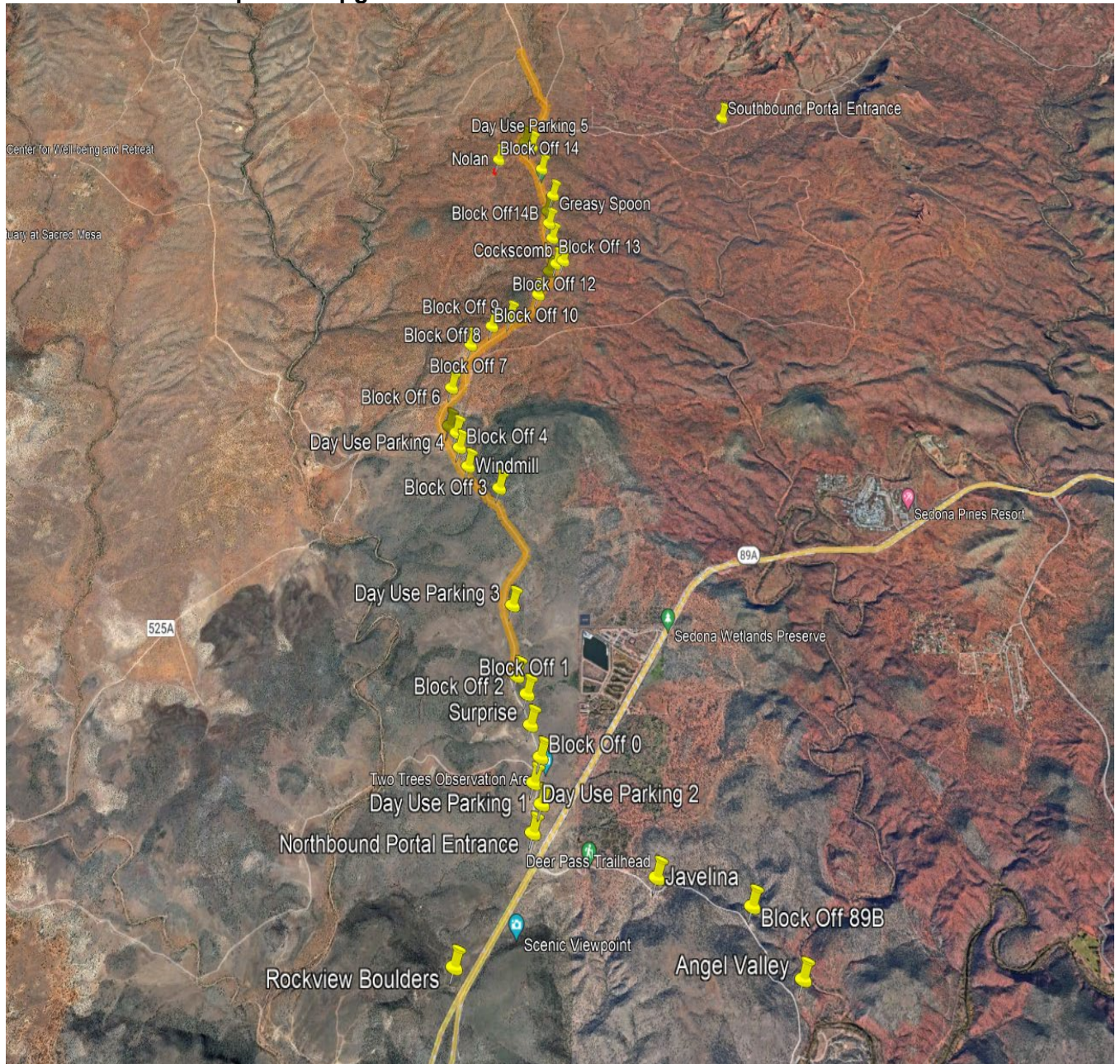
- (a) **Block Off 15 (34°52'59.4"N ; 111°54'32.1"W)(East Side)**. Boulders sourced from project quarry.
- (b) **Block Off 14 (34°52'46.2"N ; 111°54'23.9"W)(West Side)** . All boulders at location. Move excess boulders to Nolan.
- (c) **Block Off 14a (34°52'26.6"N ; 111°54'20.8"W)(East Side)**. Boulders sourced from project quarry.
- (d) **Block Off 14b (34°52'21.2"N ; 111°54'19.9"W)(East Side)**. Boulders sourced from project quarry.
- (e) **Block Off 13 (34°52'14.59"N ; 111°54'18.3"W)(East Side)**. Boulders sourced from project quarry.
- (f) **Block Off 9 (34°51'40.9"N ; 111°54'35.3"W)(East Side)**. Boulders sourced from project quarry.
- (g) **Block Off 8 (34°51'37.4"N ; 111°54'42.8"W)(West Side)**. Boulders sourced from project quarry.
- (h) **Block Off 7 (34°51'30.0"N ; 111°54'51.24"W)(West Side)**. Boulders sourced from project quarry.
- (i) **Block Off 6 (34°51'13.8"N ; 111°54'58.0"W)(West Side)**. Boulders sourced from project quarry. Retain access to FS 9513.
- (j) **Block Off 4 (34°50'51.9"N ; 111°54'53.2"W)(West Side)**. Boulders sourced from project quarry.
- (k) **Block Off 3 (34°50'37.4"N ; 111°54'36.5"W)(East Side)**. Boulders sourced from project quarry.
- (l) **Block Off 2 (34°49'38.4"N ; 111°54'27.0"W)(West Side)**. Boulders sourced from project quarry.
- (m) **Block Off 1 (34°49'33.0"N ; 111°54'23.12"W)(West Side)**. Boulders sourced from project quarry.

- (n) **Surprise Site (34°49'24.1"N ; 111°54'21.5"W)(West Side)** Use onsite boulders to clean up boulder alignment and fill gaps.
- (o) **Block Off Zero (34°49'15.0"N ; 111°54'17.73"W)(West Side)**. Boulders sourced from project quarry.
- (p) **Block Off in between Javelina and Angel Valley (89b) (34°48'35.8"N ; 111°53'7.0"W)(East Side)**. All boulders at location.

3. Optional item: Place 1,375 ft of boulders at the junction of FR 9570 and FR 9570A to delineate authorized roadway

- (q) **Rockview Site (34°48'21.4"N ; 111°54'43.7"W)(North and South Sides of 9570)**. Place 1,375 feet of boulders along entry road. Source boulders from project quarry.

### Attachment B: Map of Campground Delineation and Closure Boulder Placement Sites



**Attachment C: Map of Optional Item, Rockview Boulders**



## **Attachment D: Industrial Fire Plan**

SOUTHWEST INTERAGENCY FIRE RESTRICTIONS & CLOSURE MASTER OPERATING PLAN

### **COCONINO NATIONAL FOREST**

#### **INDUSTRIAL FIRE PRECAUTIONS PLAN GUIDELINES**

**For**

#### **AUTHORIZED USERS**

#### **PURPOSE**

The purpose of fire restrictions and industrial fire precautions is to reduce the risk of human-caused fires. The Industrial Fire Precautions Plan Guidelines and its associated fire precautionary measures must be followed year round. The intent of this guide is to provide authorized users with the information they need to ensure their operations conform to the standards and requirements outlined within this document. For the purpose of this plan, authorized users include any permit holder, lease, contractor, subcontractor and other user, engaged in permitted operations on Coconino National Forest Lands.

When operating on Coconino National Forest Lands, it is incumbent on the permitted user to know the current Emergency Fire Precaution Schedule and to take the appropriate actions to meet the mitigation measures in these guidelines. In addition, it is also incumbent on the authorized user to inform any and all of their subordinates (contractors, sub-contractors, etc....) of these precautions and to ensure that all requirements are being met.

At all times, users shall have a plan of action which briefly states what preventative measures will be taken to mitigate fire occurrence. Users should clearly designate a fireguard and what actions will be taken should a fire occur, including the notification process.

#### **GENERAL FIRE PRECAUTIONARY MEASURES**

##### **COMMUNICATIONS**

Authorized users shall ensure a serviceable telephone, radio-telephone or radio communication system is available to provide prompt and reliable communications between the authorized user's operations and the Coconino National Forest. In the event of a wildland fire ignition, users shall contact **Flagstaff Dispatch – (928) 526-0600**.

##### **FIRE TOOLS**

Authorized users shall furnish and maintain, in good working order, fire tools to be used only for suppressing wildland fires. Each operation shall be provided with one firefighting tool per person to equip all personnel engaged in authorized user's operations. Approved firefighting tools may include the following: pulaski; McLeod tool; long handled shovel. These tools are separate from those required to be mounted on equipment.

##### **FIRE TOOLS ON EQUIPMENT**

Passenger carrying vehicles, including light pickup trucks and all-terrain vehicles, shall be equipped with one (1) long-handled round pointed shovel and one (1) ABC dry chemical fire extinguisher not less than 2 1/2 pounds capacity. Each internal combustion fuel carrying piece of equipment (dump truck, dozer, excavator, backhoe, etc.) shall be equipped with one long-



handled round-pointed shovel, and one 5-pound capacity ABC dry chemical fire extinguisher. Shovels and fire extinguishers shall be so mounted as to be readily reached from the ground.

### **SPARK ARRESTERS AND MUFFLERS**

Authorized user will ensure that each internal combustion engine shall be equipped with a spark arrester qualified and rated under USDA Forest Service Standard (Spark Arrester Guide) 5100-1a or the latest revision of Society of Automotive Engineers "medium size engine, SAE recommended practice J350" unless it is:

(a) Equipped with a turbine-driven exhaust supercharger such as the turbocharger. There shall be no exhaust bypass.

(b) A multi-position engine, such as on power saws purchased after 6/30/77 which must meet the performance levels set forth in the Society of Automotive Engineers "multi-positioned small engine exhaust fire ignition standard, SAE recommended practice J335B" as now or hereafter amended. Those purchased prior to the above date shall be equipped with an approved spark arrester/muffler containing a 0.023 inch mesh screen in good condition.

(c) A passenger carrying vehicle or light truck, or medium truck up to 40,000 GVW, used on roads and equipped with a factory designed muffler and an exhaust system in good working condition.

(d) A heavy duty truck, such as a dump truck, or other vehicle used for commercial hauling, used only on roads and equipped with a factory designed muffler and with a vertical stack exhaust system extending above the cab.

Exhaust equipment described in this Subsection, including spark arresters and mufflers, shall be properly installed and constantly maintained in serviceable condition and not modified in any manner.

### **POWERED HAND TOOLS**

During periods of use, each powered handtool operator shall have readily available for use, one long-handled round-pointed shovel and one chemical-pressurized ABC dry chemical fire extinguisher of not less than 8-ounce capacity by weight. Muffler, extinguisher, and shovel shall be maintained in good working order at all times. Fueling or refueling of a powered handtool shall be done in an area which has been completely cleared of material which will carry fire.

Powered hand tools shall be moved at least 10 feet from the place of fueling or refueling before starting.

### **GAS OIL STORAGE AND SERVICE AREAS**

The location of equipment service areas and gas and oil storage areas shall be approved in writing by the permit administrator. All areas shall be cleared of brush, litter, grass or other flammable debris for a radius of 50 feet.

### **BURNING OF REFUSE**

No slash or other debris, such as that resulting from clearing on right-of-way, shall be burned without the written consent of the Coconino National Forest.

**BLASTING**

Use of fuses in blasting shall not be permitted. A long-handled round-pointed shovel and at least five gallons of water for fire fighting purposes shall be available at all times. A fire guard must remain on the blasting site for a minimum of one hour after blasting operations have concluded.

**WELDING**

An area of sufficient size but not less than a 10 foot radius shall be cleared down to mineral soil before welding operations are started. Prior to welding, authorized user shall have available a round-pointed long-handled shovel, at least 5-gallons of water, and a 5-pound fire ABC dry chemical extinguisher at each welding site. A fire guard must remain on the welding site for a minimum of one hour after welding operations have concluded.

**SPECIFIC FIRE PRECAUTIONARY MEASURES**

EMERGENCY FIRE PRECAUTION SCHEDULE	
FIRE RESTRICTION/CLOSURE "STAGE"	
"STAGED" RESTRICTION LEVELS	INDUSTRIAL FIRE PRECAUTION PLAN
NO RESTRICTIONS	A
STAGE I	B
STAGE II	C
PARTIAL/FOREST CLOSURE **	D
RED FLAG WARNING (Issued by National Weather Service)	D

**\*\* Partial Forest Closure:**

Project areas which are outside the boundaries of the partial forest closure may continue to operate under Industrial Fire Precaution Plan "C" operating criteria as agreed upon between the Permit Administrator and Purchaser in writing.

Project areas within the boundaries of the proclaimed partial forest closure area are to operate under Industrial Fire Precaution Plan "D".

Staged restriction levels are determined by the appropriate Forest Line Officer in consultation with the Forest Fire Management Officer and Permit Administrator. The appropriate Forest Line Officer may adjust the predicted Industrial Fire Precaution Plan for local weather conditions within a Project Area. Changes in the predicted Industrial Fire Precaution Plan shall be agreed to in writing.

**INDUSTRIAL FIRE PRECAUTION PLAN – DESCRIPTION**

Authorized user will restrict operations in accordance with the attached Emergency Fire Precaution Schedule:

- A** - Normal Fire Precautions - No fire guard required except for welding and blasting operations.
- B** - Normal Fire Precautions – Authorized user will provide fire guard.
- C** - All power equipment use as well as blasting and welding operations will shut down from 9:00 am until 8:00 pm Mountain Standard Time (10:00 am to 9:00 pm MDT). Operations on mineral

soil involving activities such as road excavation, watering, grading, surfacing, rock crushing, and/or other equipment maintenance may continue. Authorized user will provide fire guard.

**D** - Shutdown all operations; except operations on mineral soil involving road excavation, watering, grading, gravel surfacing, and rock crushing may continue with special Forest Service permit. Blasting and welding are prohibited. Authorized user will provide fire guard.

### **FIRE GUARDS**

To prevent, detect, and suppress wildland fire, authorized users shall provide a fire guard at each operating area where power-driven equipment and tools have been operated during the day. The fire guards shall constantly perform their duties during operating hours and for three (3) hours after the work stops for the day, when the Fire Precaution Plan is Plan “**B**”, “**C**”, or “**D**”.

A fire guard on one operating area shall satisfy the requirements on adjacent areas if the travel time with available transportation is not in excess of ten (10) minutes to any of the other areas requiring such service and provided the fire guard patrols all area where authorized user’s activities occurred.

Each fire guard shall be vigilant, able and prepared to take actions to prevent, detect, and report any wildland fires and to promptly and efficiently take suppression action with available required firefighting equipment and personnel on any wildland fire that starts on project area. Each fire guard shall be equipped with a vehicle and a fire tool cache consisting of a cache box with a complement of fire tools maintained in serviceable condition. Approved firefighting tools may include the following: Pulaski; McLeod: long handles round pointed shovel. The fire guard will also carry at least 25 gallons of water for firefighting purposes.

### **RED FLAG WARNING**

A red flag warning is issued when the combination of dry fuels and weather conditions support extreme fire danger. Red flag warnings are issued by the National Weather Service for land and fire managers to highlight the increased fire danger.

- RED FLAG WARNING is issued if conditions are occurring or will occur within the next 24 hours that would support extreme fire danger.

When a Red Flag Warning is issued by the National Weather Service, all authorized user operations will adhere to Industrial Fire Precaution Plan “**D**” and will shut down operations until the Red Flag Warning is rescinded.