



United States Department of Agriculture

# Improving Environmental Analysis and Decision Making



Forest  
Service



# **Forest Service Change Efforts**

**Ensuring a Safe and Rewarding Workplace**

**Reducing the Costs/Risk of Fire Suppression**

**Environmental Analysis and Decision Making**

**Forest Products Modernization**

“we have seen firsthand how cumbersome, time-consuming, and expensive USFS processes can be compared with other agencies”

Forest Service's Largest  
Stewardship Partner

“We believe the primary problems with – and solutions to – the Forest Service’s NEPA process lie not with the agency’s regulations and procedures but with operational and organizational culture issues that can be addressed within the scope of the agency’s existing authority. “

Coalition of Environmental Groups

We encourage you to return to the Council on Environmental Quality's (CEQ) guidelines (40 CFR 1500-1508) as a starting point rather than the Forest Service Manuals.

...the USFS has added onerous detail to its environmental analyses. This has added years to planning processes and resulted in lengthy analyses that are difficult for the public to understand.

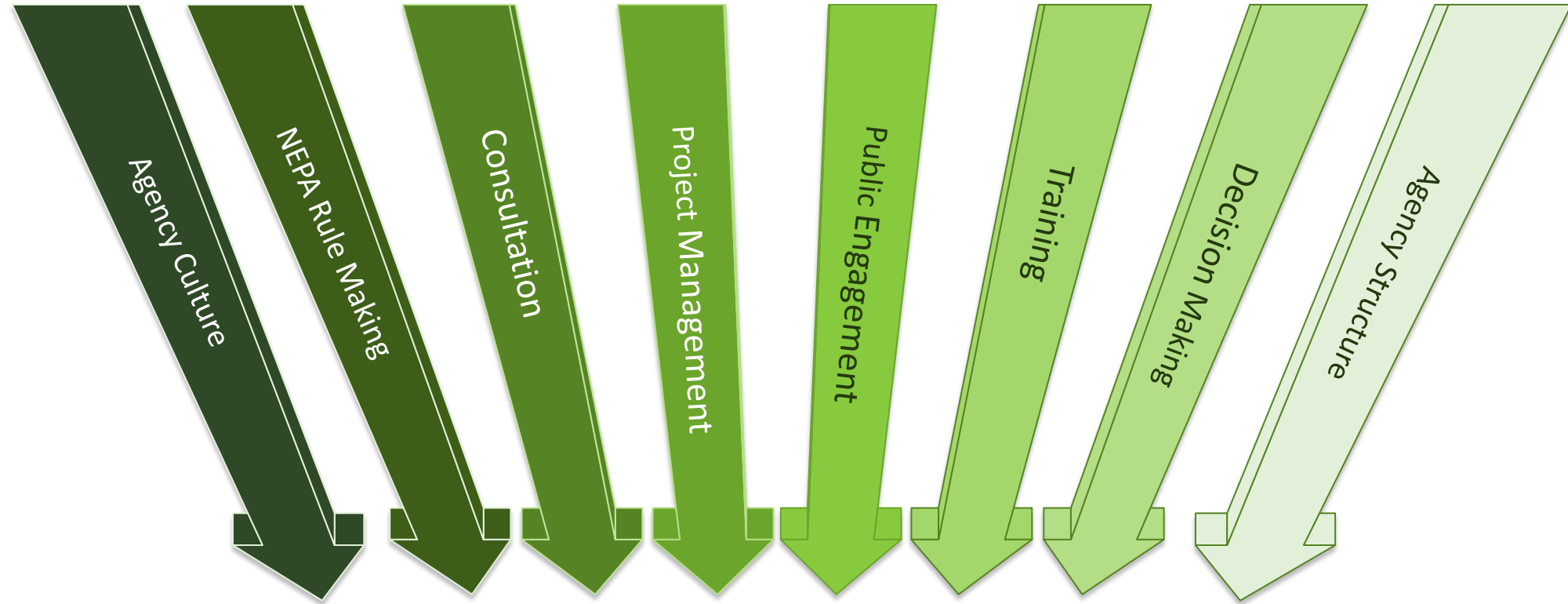
Governor Bullock - Montana

## Our Goal

The goal of the Environmental Analysis and Decision Making effort is to:

- Increase the diversity, health, resilience, and productivity of our national forests and grasslands.
- Make High Quality Decisions based on Science and Public Engagement
- Reduce the time and cost of project analysis and decision making.
- Increase the scale of analysis and accomplish more work on-the-ground.





# EADM





## Our Commitment

The Forest Service will follow all laws, regulations, and policies to deliver scientific-based, high-quality environmental analysis that leads to sound land management decisions and honors our stewardship responsibilities.

The agency is committed to working with employees at all levels of the Forest Service, along with engaging the public, our partners, and tribes.





## Special Use Permit Backlog

More than 6,000 special use permits impacting more than 7000 businesses

## Fire and Disease Risk

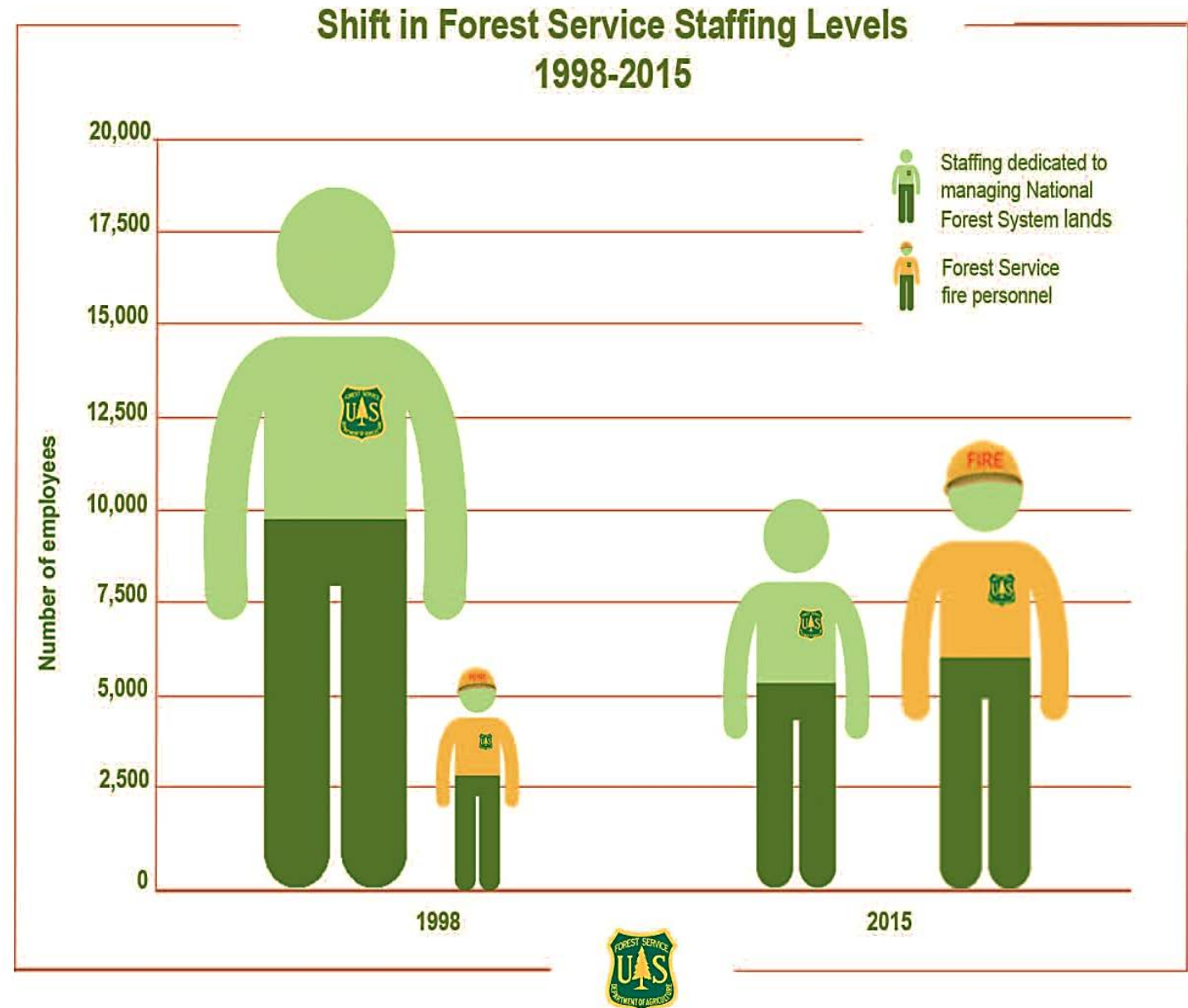
More than 80 million acres at risk from fire and disease.

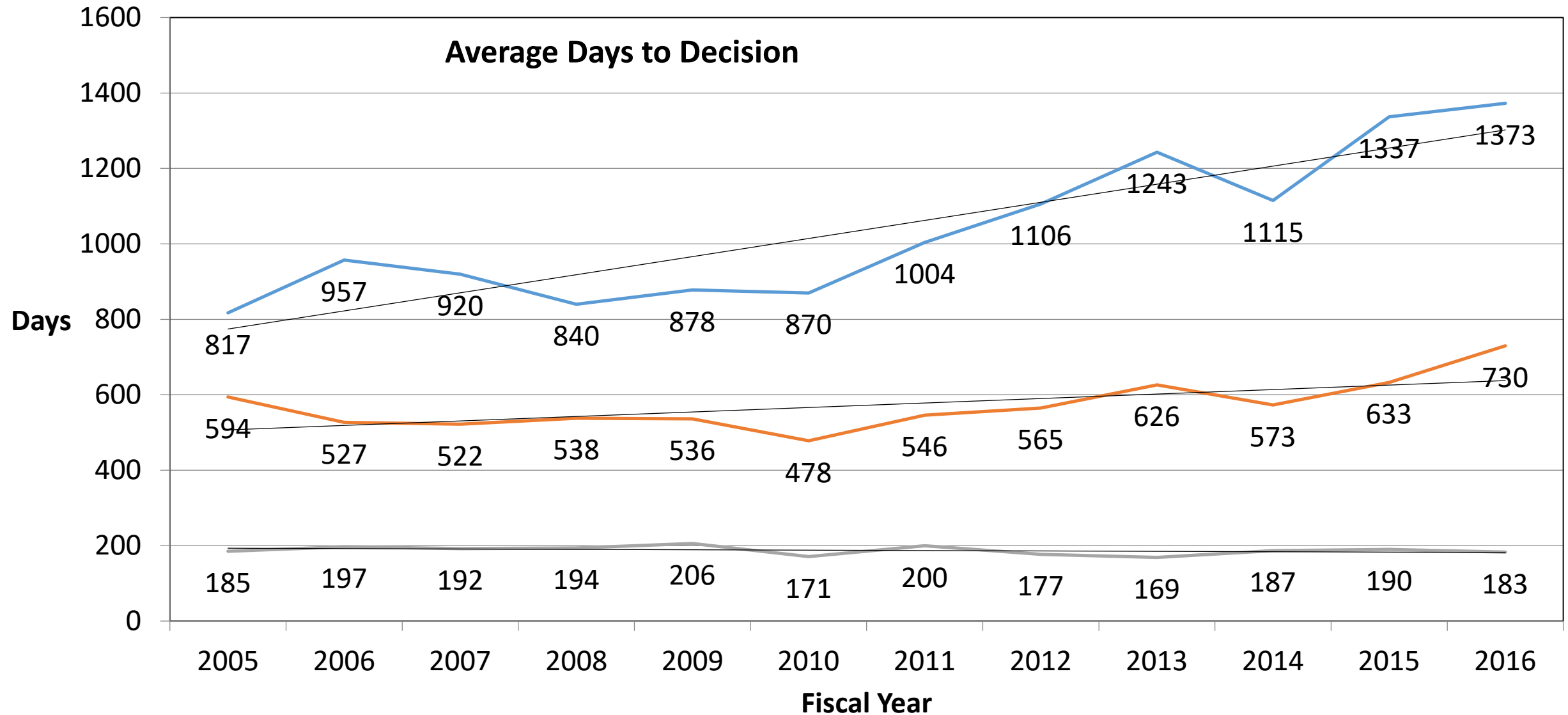
## Restoration

Watersheds, Habitats, and Infrastructure are declining

## Workforce

Non-fire workforce at lowest capacity in years.







**Examine and  
Reform Forest  
Service Policy**

**Train Our  
Employees**

**Improve  
Efficiency  
through  
Technology**

**Change the  
Way  
We Do  
Business**

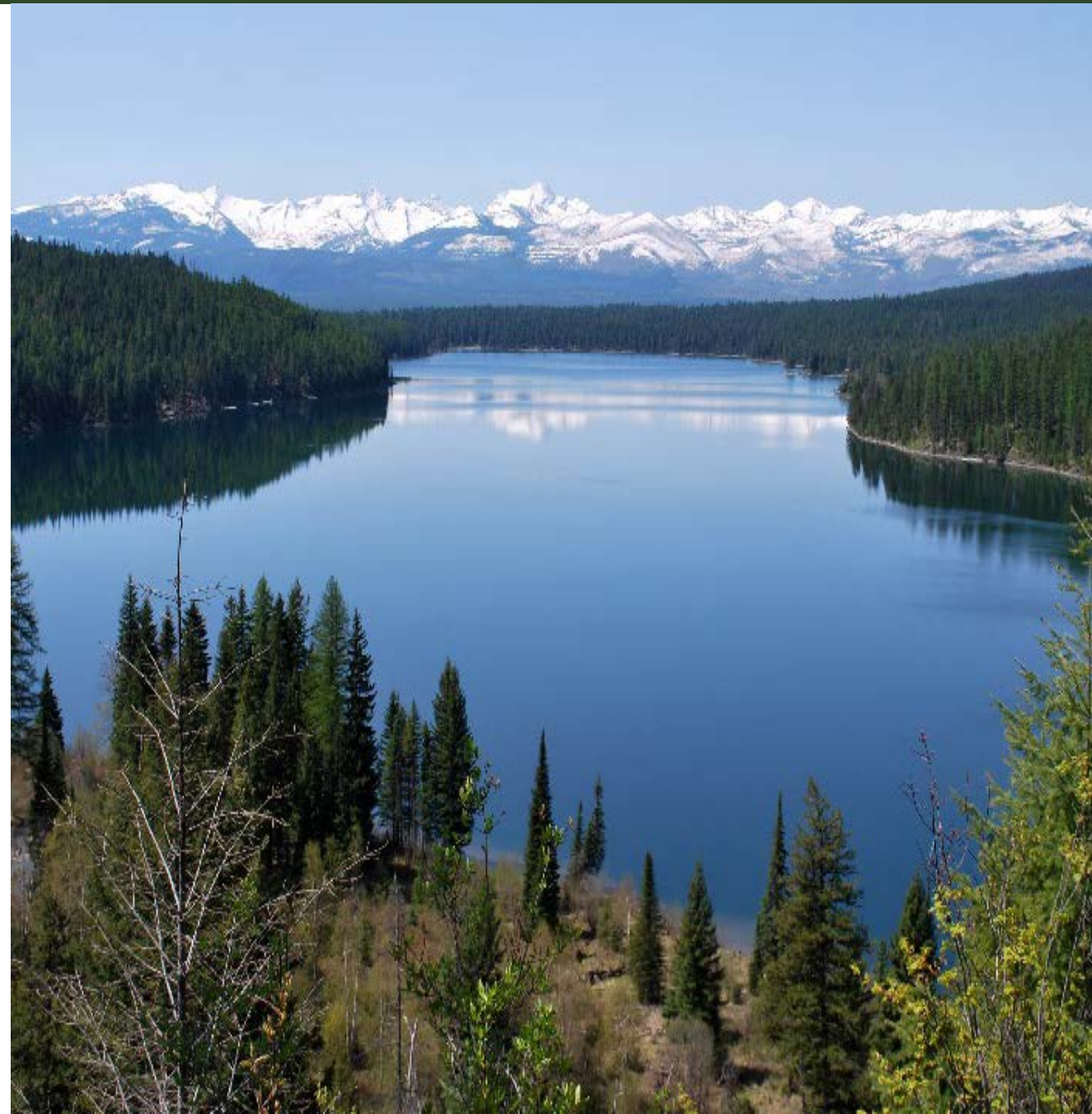
**Improve  
Consultation  
with  
Other  
Agencies**

**Develop New  
Performance  
Standards**

Experience and skill of experts in across all agency levels.

Challenging employees to innovate.

Collective learning opportunities with partners and tribes.







- Performance Standards Across Agency
- Quarterly Check ins with Chief by Cadres
- Comprehensive, national environmental analysis and decision making improvements by 2019.

# Get Involved Partner Roundtables:


<https://nff.wildapricot.org/page-1693922>

FS EADM website:

<https://www.fs.fed.us/managing-land/eadm>







Chris French, Associate Deputy Chief  
National Forest System, USDA Forest Service  
phone: 202-205-1523, email: [cfrench@fs.fed.us](mailto:cfrench@fs.fed.us)

Glenn Casamassa, Associate Deputy Chief  
National Forest System, USDA Forest Service  
phone: 202-205-1523, email: [gcasamassa@fs.fed.us](mailto:gcasamassa@fs.fed.us)

Jeanne Higgins, National Policy Reform Lead  
National Forest System, USDA Forest Service  
phone: 202-205-1523, email: [jmhiggins@fs.fed.us](mailto:jmhiggins@fs.fed.us)