




United States Department of Agriculture

A wide-angle landscape photograph of a mountain range at dusk or dawn. The foreground is a lush green meadow with numerous purple wildflowers. To the left, a dense forest of evergreen trees stands on a slope. In the background, rugged mountain peaks are visible, some with patches of snow or light-colored rock. The sky is a mix of soft blues and oranges from the low sun. A semi-transparent dark grey box is overlaid on the right side of the image, containing the title text.

Improving Environmental Analysis and Decision Making



Forest
Service

Forest Service Change Efforts

Environmental Analysis and Decision Making
Forest Products Modernization
Oil and Gas Leasing
Land Exchange Process
Land Authorization and Access
Efficient Infrastructure Delivery

“we have seen firsthand how cumbersome, time-consuming, and expensive USFS processes can be compared with other agencies”

Forest Service's Largest
Stewardship Partner

“We believe the primary problems with – and solutions to – the Forest Service’s NEPA process lie not with the agency’s regulations and procedures but with operational and organizational culture issues that can be addressed within the scope of the agency’s existing authority. “

Coalition of Environmental Groups

We encourage you to return to the Council on Environmental Quality's (CEQ) guidelines (40 CFR 1500-1508) as a starting point rather than the Forest Service Manuals.

...the USFS has added onerous detail to its environmental analyses. This has added years to planning processes and resulted in lengthy analyses that are difficult for the public to understand.

Governor Bullock - Montana

Our Goal

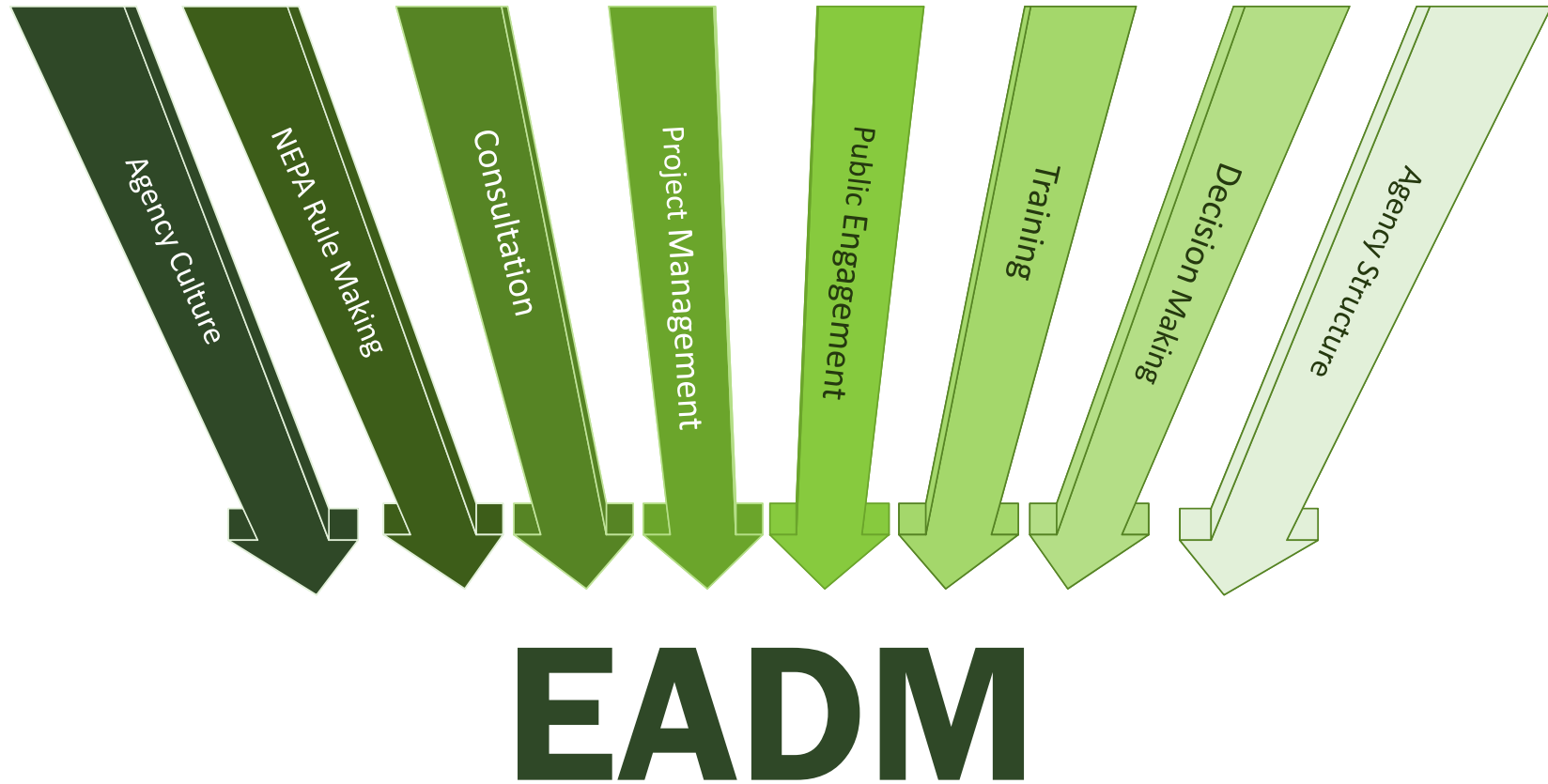
The goal of the Environmental Analysis and Decision Making effort is to increase the diversity, health, resilience, and productivity of our national forests and grasslands.

Reduce the time and cost of project analysis and decision making.

Increase the scale of analysis and accomplish more work on-the-ground.

Boldly, and creatively design new ways to care for the land and the people we serve.



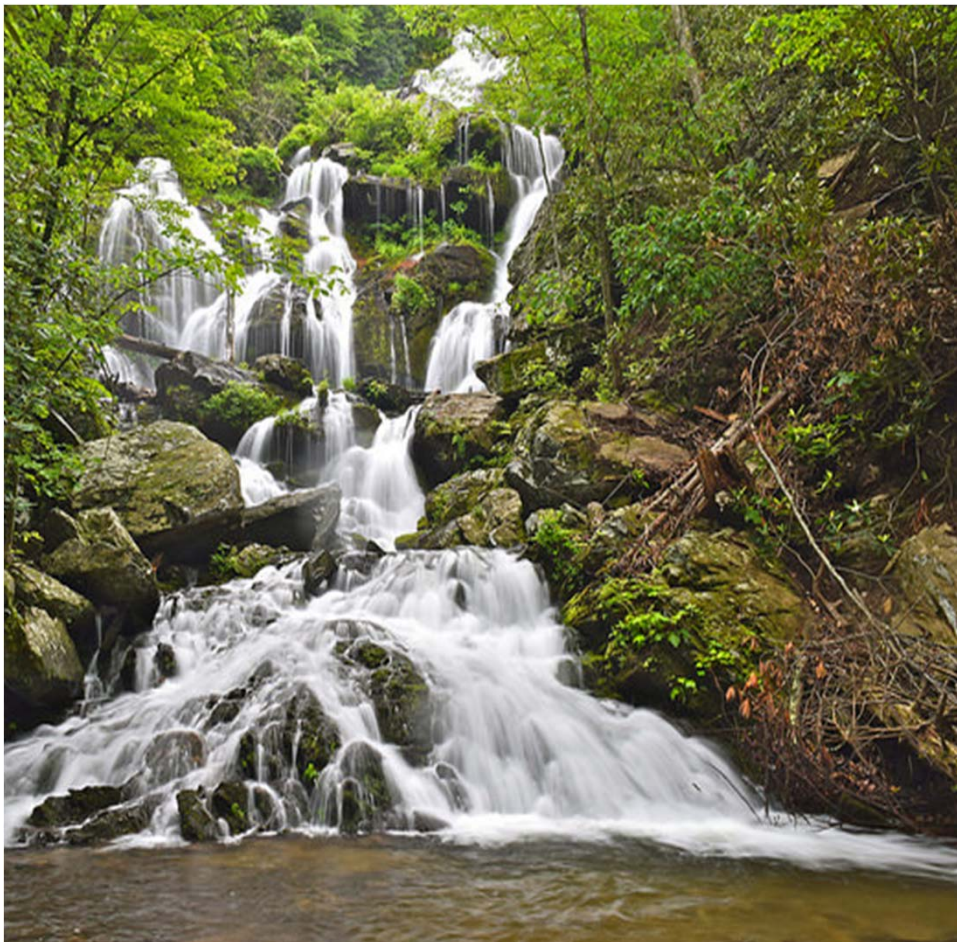




Our Commitment

The Forest Service will follow all laws, regulations, and policies to deliver scientific-based, high-quality environmental analysis that leads to sound land management decisions and honors our stewardship responsibilities.

The agency is committed to working with employees at all levels of the Forest Service, along with engaging the public, our partners, and tribes.



Special Use Permit Backlog

More than 6,000 special use permits impacting more than 7000 businesses

Fire and Disease Risk

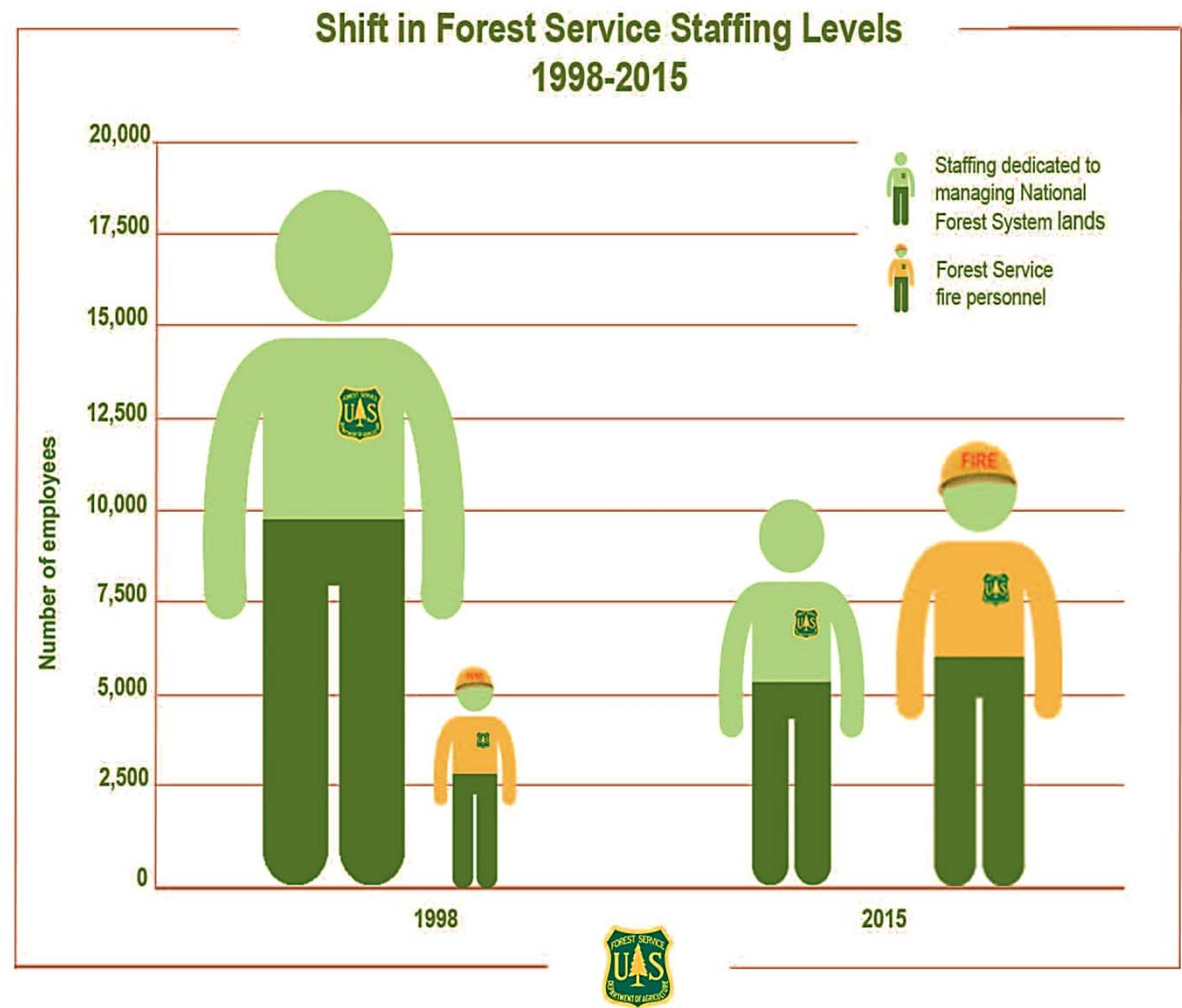
More than 80 million acres at risk from fire and disease.

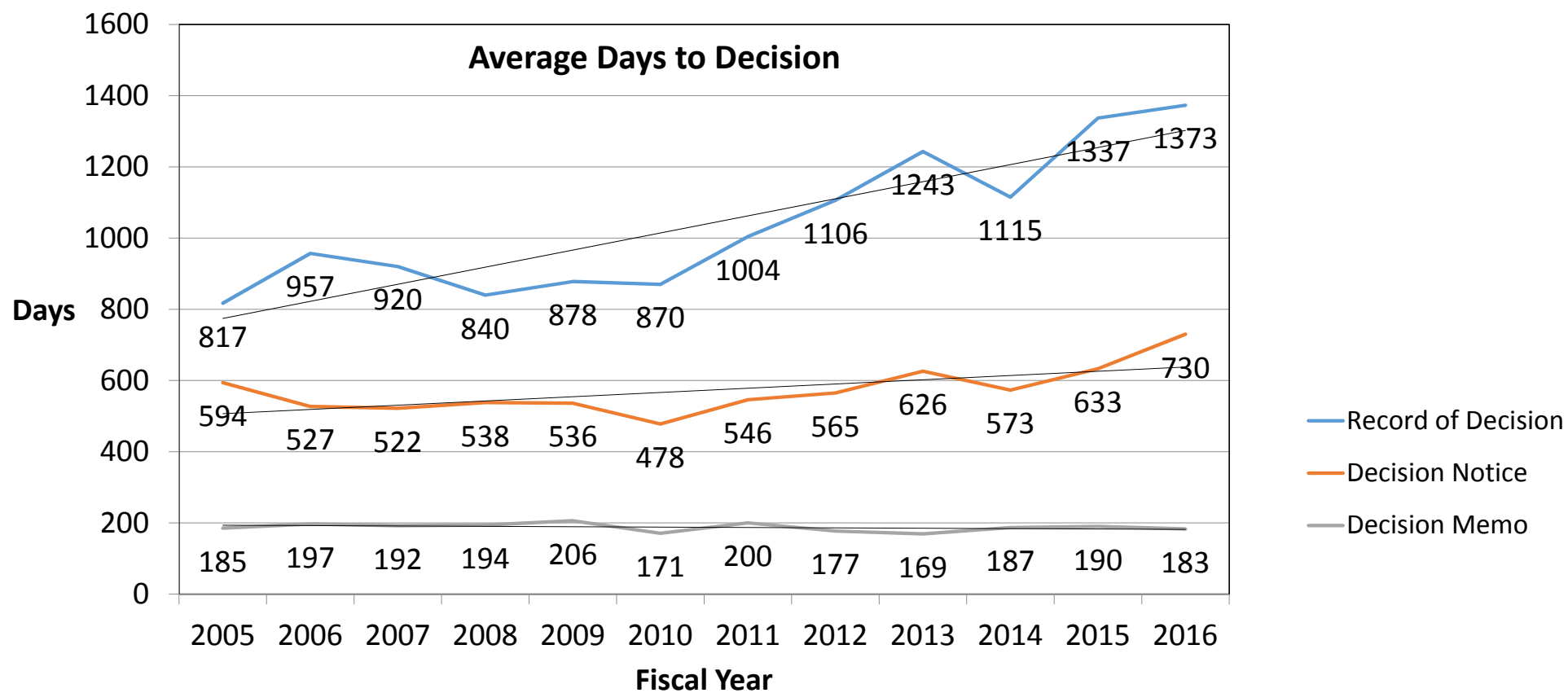
Restoration

Watersheds, Habitats, and Infrastructure are declining

Workforce

Non-fire workforce at lowest capacity in years.





**Examine and
Reform Forest
Service Policy**

**Train Our
Employees**

**Improve
Efficiency
through
Technology**

**Change the
Way
We Do
Business**

**Improve
Consultation
with
Other
Agencies**

**Develop New
Performance
Standards**



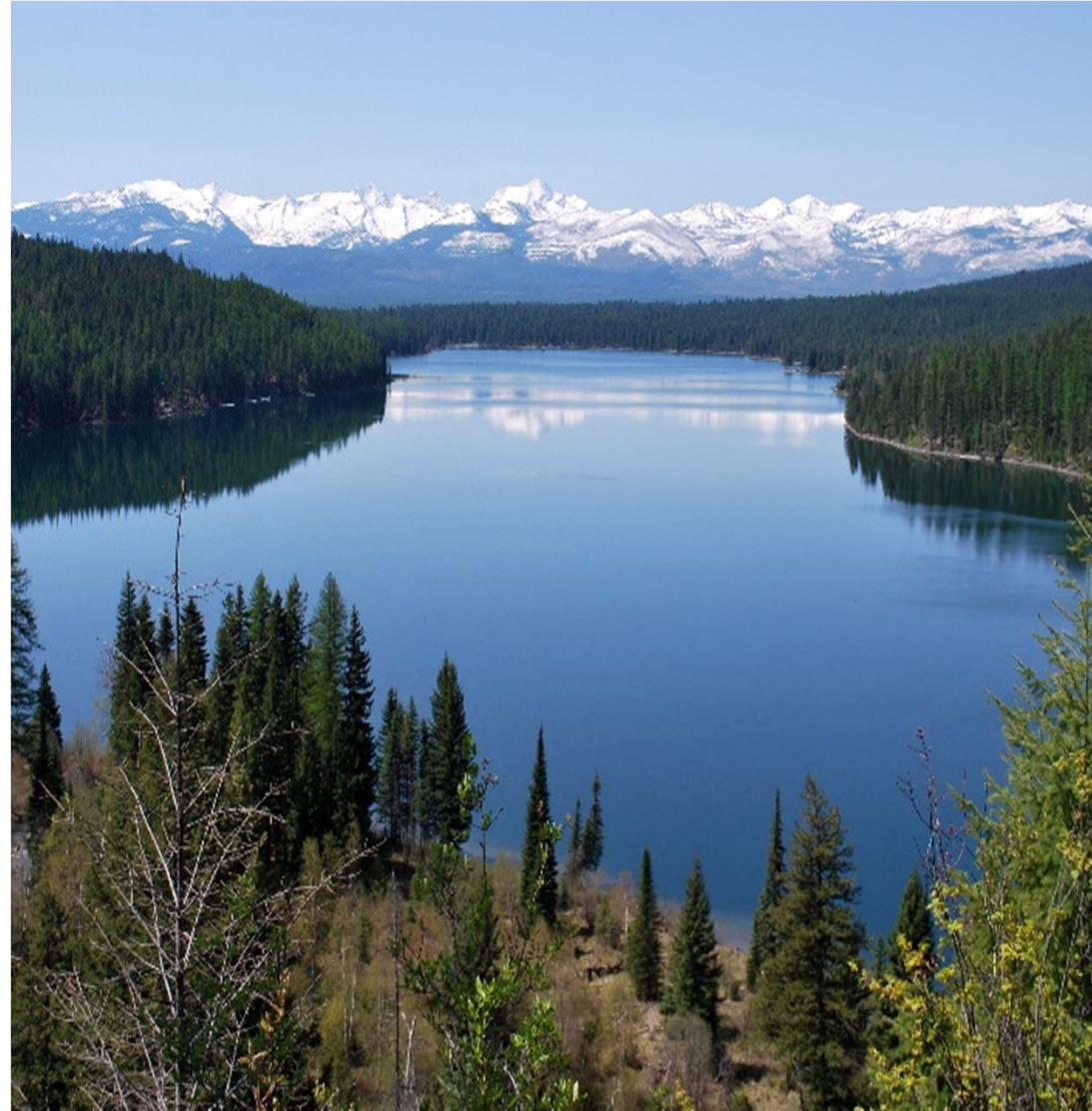
Decrease in cost and an increase in efficiency by 20%.

Comprehensive, national environmental analysis and decision making improvements by 2019.

Experience and skill of experts in across all agency levels.

Challenging employees to innovate.

Collective learning opportunities with partners, states, and tribes.



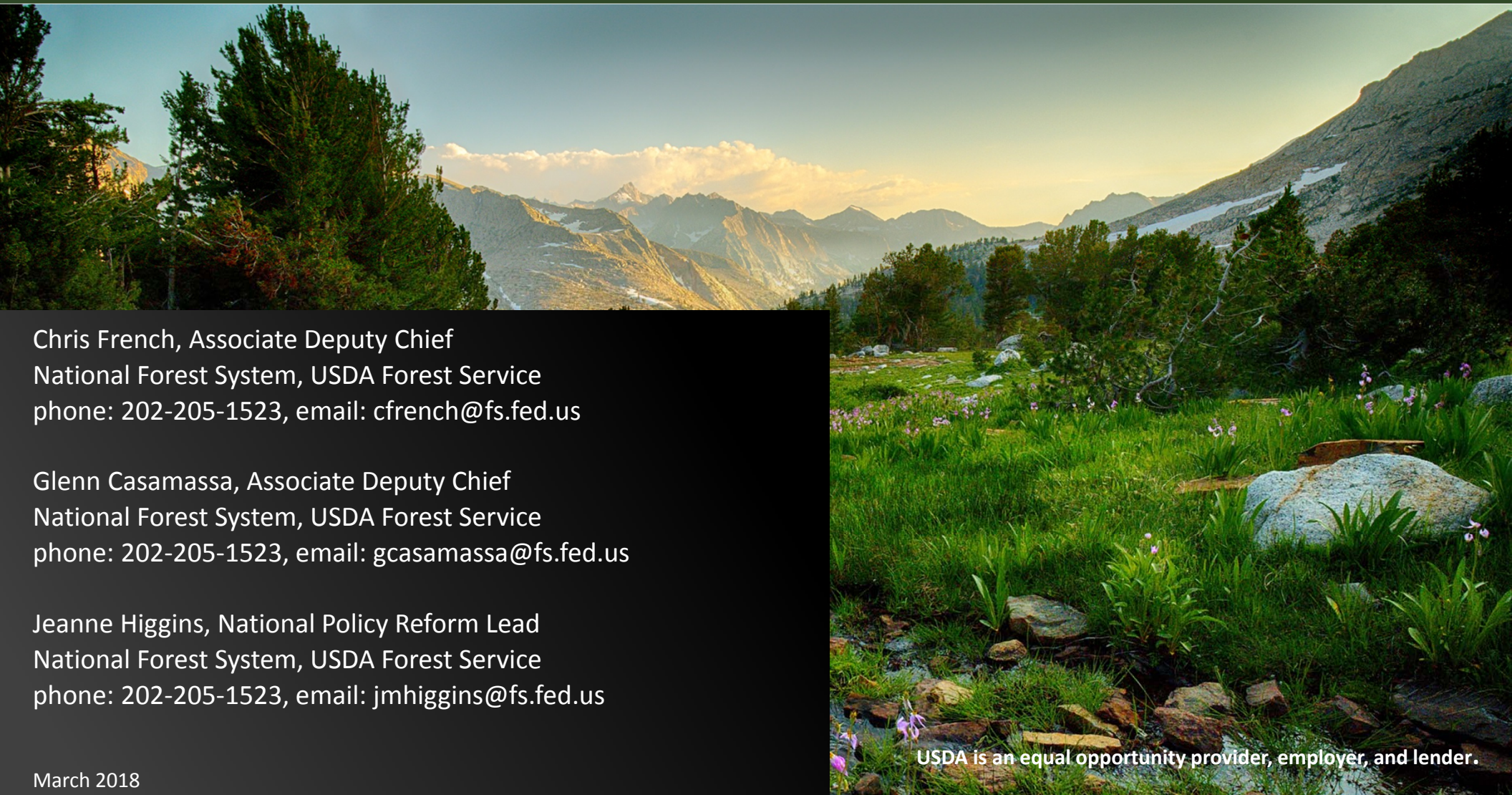
Get Involved Partner Roundtables:

<https://nff.wildapricot.org/page-1693922>

FS EADM website:

<https://www.fs.fed.us/managing-land/eadm>





Chris French, Associate Deputy Chief
National Forest System, USDA Forest Service
phone: 202-205-1523, email: cfrench@fs.fed.us

Glenn Casamassa, Associate Deputy Chief
National Forest System, USDA Forest Service
phone: 202-205-1523, email: gcasamassa@fs.fed.us

Jeanne Higgins, National Policy Reform Lead
National Forest System, USDA Forest Service
phone: 202-205-1523, email: jmhiggins@fs.fed.us

March 2018

USDA is an equal opportunity provider, employer, and lender.