



United States Department of Agriculture

Improving Environmental Analysis and Decision Making



Forest
Service

Forest Service Change Efforts

Ensuring a Safe and Rewarding Workplace

Reducing the Costs/Risk of Fire Suppression

Environmental Analysis and Decision Making

Forest Products Modernization

“we have seen firsthand how cumbersome, time-consuming, and expensive USFS processes can be compared with other agencies”

NWTF - Forest Service's
Largest Stewardship Partner

“We believe the primary problems with – and solutions to – the Forest Service’s NEPA process lie not with the agency’s regulations and procedures but with operational and organizational culture issues that can be addressed within the scope of the agency’s existing authority. “

Coalition of Environmental Groups

We encourage you to return to the Council on Environmental Quality's (CEQ) guidelines (40 CFR 1500-1508) as a starting point rather than the Forest Service Manuals.

...the USFS has added onerous detail to its environmental analyses. This has added years to planning processes and resulted in lengthy analyses that are difficult for the public to understand.

Governor Bullock - Montana

Agency personnel often write NEPA documents in anticipation of litigation, instead of aiding in decision-making ... the litigation-driven approach to NEPA has led the Forest Service to engage in exhaustive NEPA analysis

These conditions have especially crippled the Forest Service, with “analysis paralysis”...keeping the Forest Service from accomplishing its land management goals

American Farm Bureau Federation

Our Goal

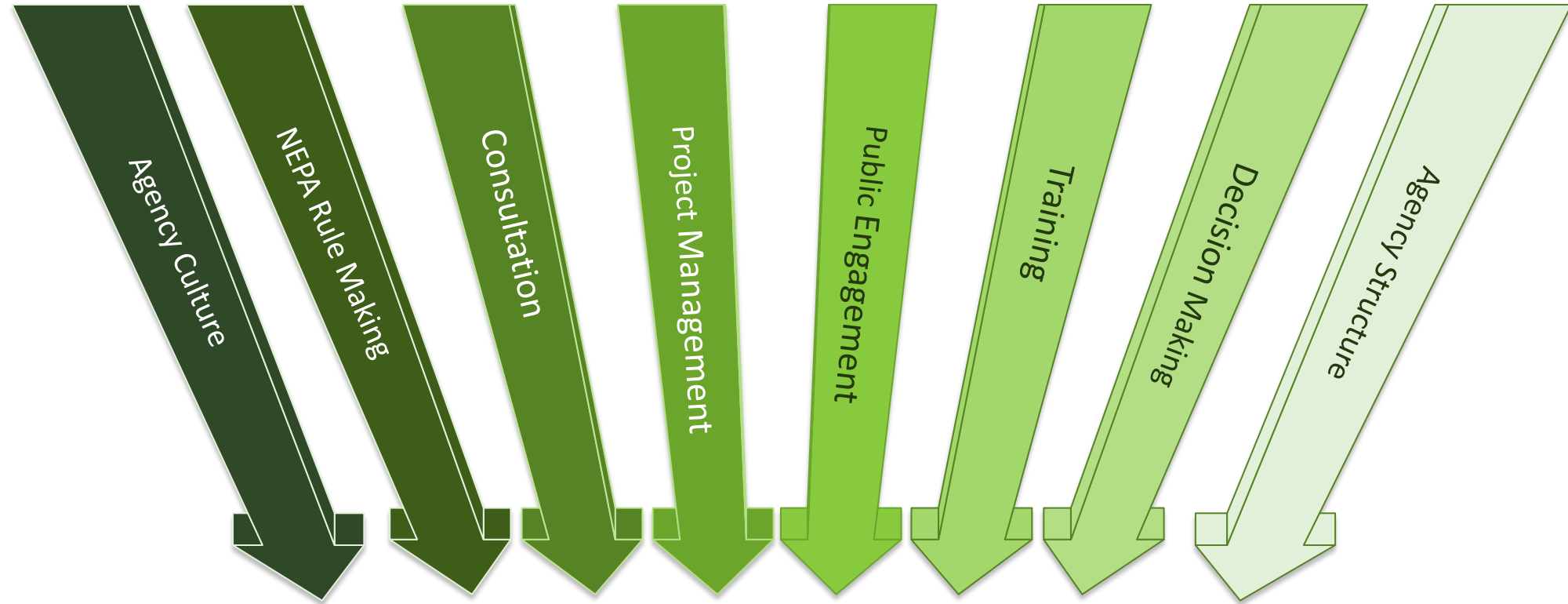
The goal of the Environmental Analysis and Decision Making effort is to:

- Increase the diversity, health, resilience, and productivity of our national forests and grasslands.
- Make High Quality Decisions based on Science and Public Engagement
- Reduce the time and cost of project analysis and decision making.
- Increase the scale of analysis and accomplish more work on-the-ground.





- **More than 15 Years in Making**
 - **Process Predicament Analysis**
 - **A76 Privatization Study**
 - **CEQ Pilots**
 - **NEPA Efficiency Pilots**
 - **NEPA Line Officer Team**
 - **Large Scale NEPA Team**
 - **Small NEPA Team**
 - **Special Use Modernization Effort**
 - **ESA and NHPA Task Forces**
 - **2017 EADM Effort**
- **Legislative Changes**
 - **Healthy Forest Restoration Act**
 - **2014 Farm Bill**
 - **2018 Omnibus Appropriations**
- **Executive Orders**



EADM



Our Commitment

The Forest Service will follow all laws, regulations, and policies to deliver scientific-based, high-quality environmental analysis that leads to sound land management decisions and honors our stewardship responsibilities.

The agency is committed to working with employees at all levels of the Forest Service, along with engaging the public, our partners, and tribes.



Special Use Permit Backlog

More than 6,000 special use permits impacting more than 7000 businesses

Fire and Disease Risk

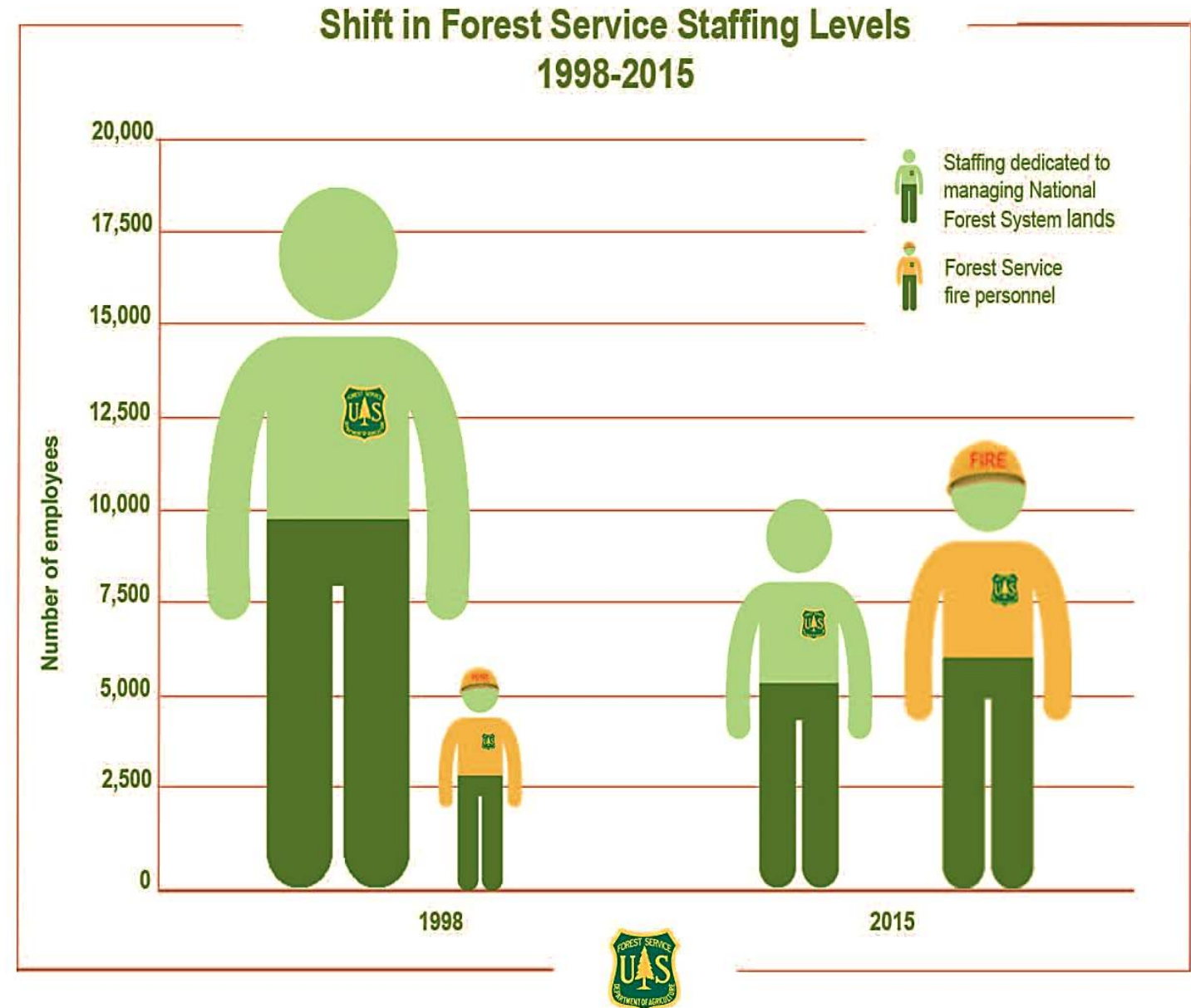
More than 80 million acres at risk from fire and disease.

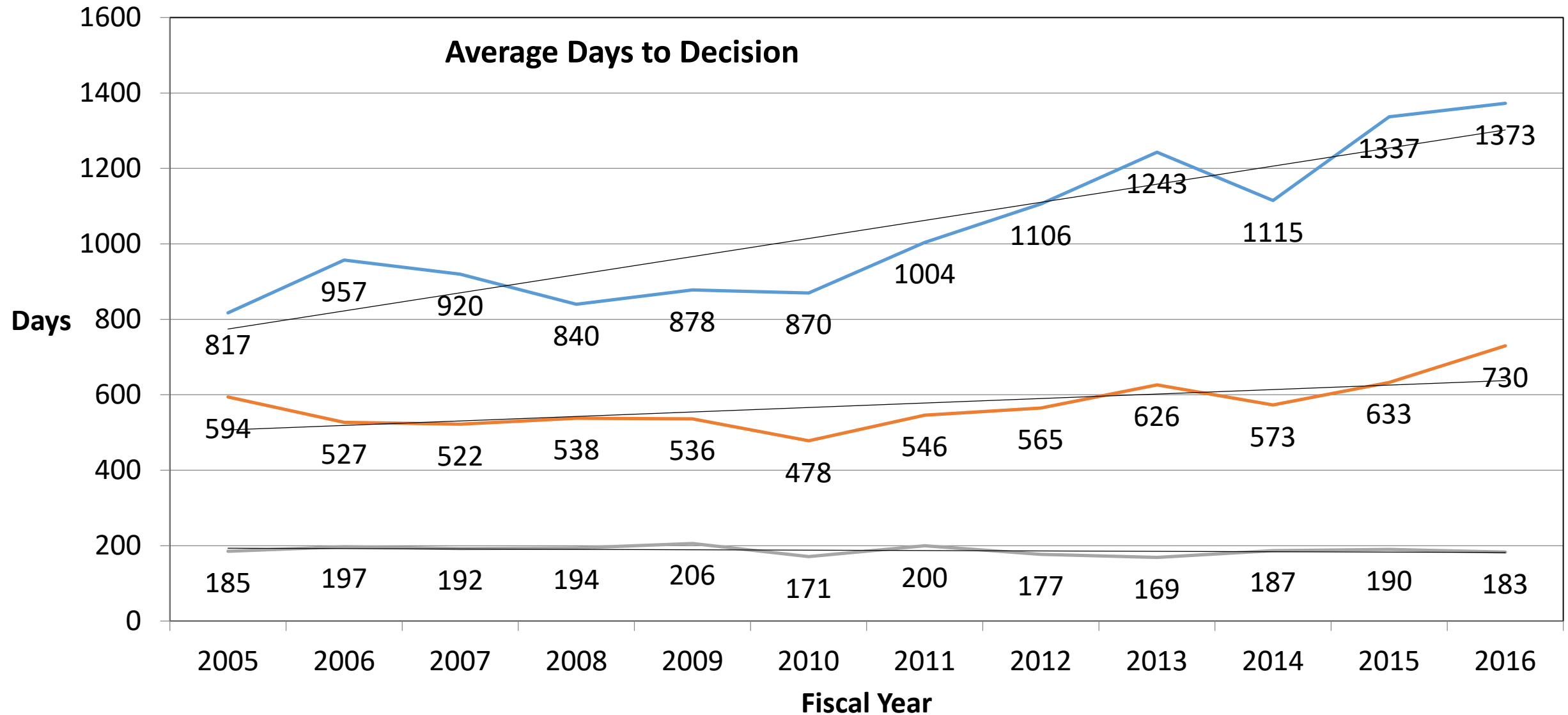
Compromised Mission

Watersheds, Habitats, and Infrastructure are declining

Workforce

Non-fire workforce at lowest capacity in years.





**Examine and
Reform Forest
Service Policy**

**Train Our
Employees**

**Improve
Efficiency
through
Technology**

**Change the
Way
We Do
Business**

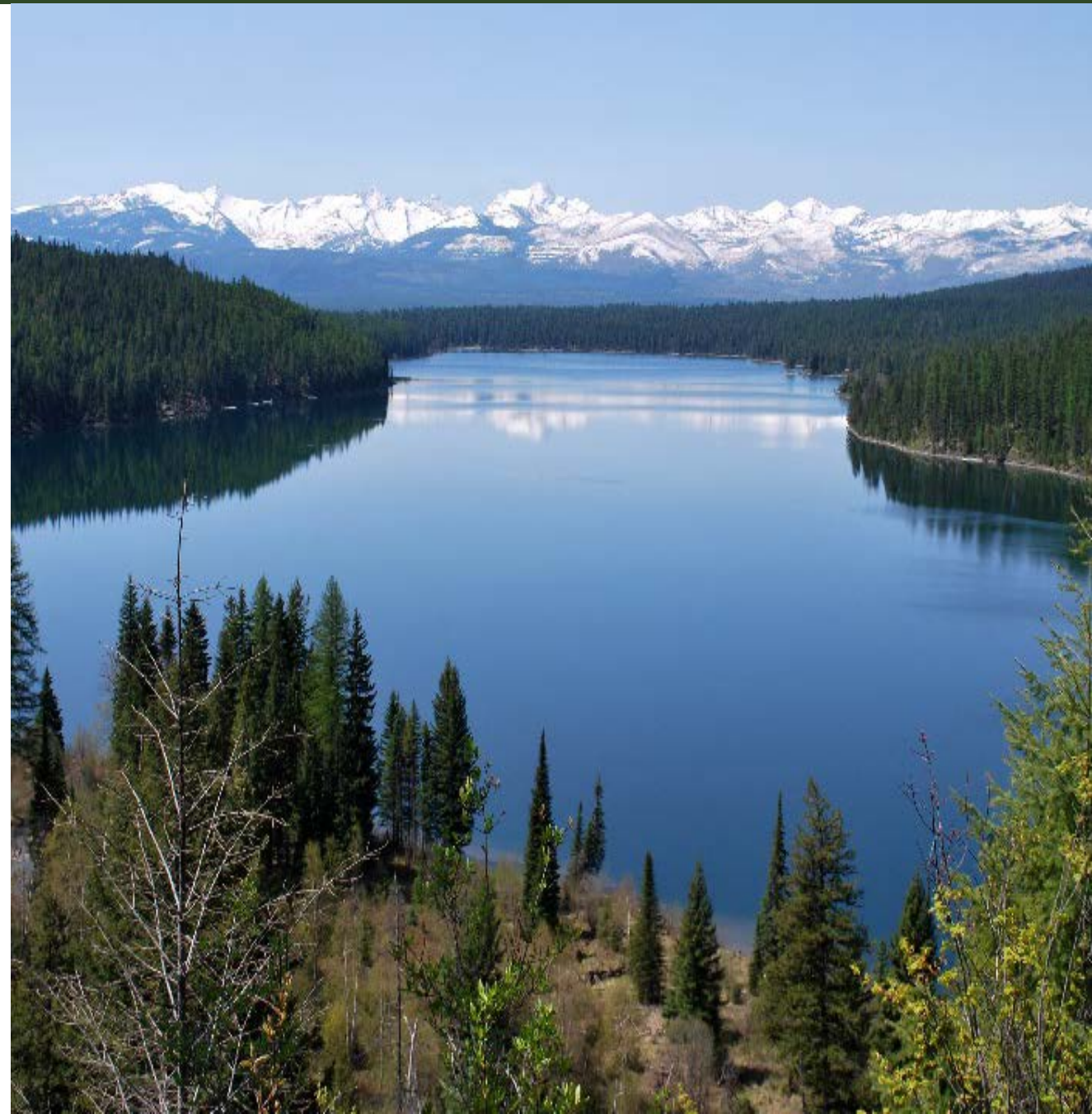
**Improve
Consultation
with
Other
Agencies**

**Develop New
Performance
Standards**

Experience and skill of experts in across all agency levels.

Challenging employees to innovate.

Collective learning opportunities with partners and tribes.





- Performance Standards Across Agency
- Quarterly Check ins with Chief by Cadres
- Comprehensive, national environmental analysis and decision making improvements by 2019.

Get Involved Partner Roundtables:

<https://nff.wildapricot.org/page-1693922>

FS EADM website:

<https://www.fs.fed.us/managing-land/eadm>



Next Steps

Complete Roundtables

- February 22 & 23, 2018, Portland, OR. (PNW)
- March 12, 2018 (NE Area)
- Mar 14, 2018, (Northern)
- March 14, 2018, District of Columbia (HQ)
- March 19, 2018, Denver, CO (Rocky Mountain)
- March 20, 2018, Chattanooga, TN. (Southern)
- March 21, 2018, Albuquerque, NM. (SW)
- March 22, 2018, Juneau, AK. (Alaska)
- March 29, 2018, Salt Lake City, UT. (Intermountain)
- March 27, 2018, Rancho Cordova, CA. (PSW)

Reports

- Regional Summary Reports
- National Summary

Presentation to Leadership

- Chief of the Forest Service
- National Leadership Council
- Staff teams working on change efforts

Next Steps - Continued

Proposed New Rule


- **New Proposed Rule will be based on:**
- Comments submitted on ANPR
- Internal expert review
- Related ideas from Roundtables & partner conversations
- External Technical Workshop results
- **Final Proposed Rule will be based on:**
- Comments and feedback results from formal public participation

Forest Service Change Efforts Continue...

- **Ensuring a Safe and Rewarding Workplace**
- **Reducing the Costs/Risk of Fire Suppression**
- Environmental Analysis and Decision Making
- Forest Products Modernization

EADM change efforts continue..

- Agency Culture
- Agency Structure
- Decision Making
- Training
- Project Management
- Public Engagement
- NEPA Rule Making
- Consultation



Chris French, Associate Deputy Chief
National Forest System, USDA Forest Service
phone: 202-205-1523, email: cfrench@fs.fed.us

Glenn Casamassa, Associate Deputy Chief
National Forest System, USDA Forest Service
phone: 202-205-1523, email: gcasamassa@fs.fed.us

Jeanne Higgins, National Policy Reform Lead
National Forest System, USDA Forest Service
phone: 202-205-1523, email: jmhiggins@fs.fed.us