

Rock Creek Wood For Life:RRGDLQJ

Request for Quote

Santa Fe National Forest, New Mexico

Background and Statement of Work: The National Forest Foundation (NFF), in partnership with Santa Fe National Forest (SFNF), seeks a contractor to implement wood hauling and delivery for the Rock Creek Wood For Life project. The purpose of this project is to provide fuelwood from forest restoration on the SFNF to the Tri-Chapters on the Navajo Nation. The Rock Creek Wood For Life project is located east of Cuba, NM on the Cuba Ranger District of the SFNF within the Rock Creek Stewardship Contract Area (**Attachment A**). This project includes two units, with hauling expected to begin on the 42-acre unit 1 with possible continuation into unit 2. Established hauling routes to each Chapter House can be seen in **Attachment B**. The selected bidder will move 30-60 whole-log loads dispersed between the Tri-Chapters in accordance with the General Specifications and Other Project Requirements below. Work will include alternating deliveries to each Chapter House and unloading logs into decks no higher than 6 feet; ideally 4 feet in height.

Information Requested

If interested in this project, please provide a quote for the above statement of work by providing approach, work experience, and cost. Please also include your capacity for this project and efficiency in log hauling projects in the past, if any.

This is a request for quotes only and quotations furnished are not offers. This request does not commit the National Forest Foundation to pay any costs incurred in the preparation or submission of the quotation or to contract for supplies or services.

General Specifications

(a) Description of Work – This Request for Quotes is for whole-log wood hauling and delivery related to the Rock Creek Wood For Life project including the following:

1. 30-60 loads of whole-log wood, with potential for more hauling; contingent upon available funding and contractor performance.
2. Hauling to Counselor, Ojo Encino, and Torreon yards, alternating loads between the three chapters.
3. Delivery of wood to the Tri-Chapters, using a self-loading logging truck and creating decks with a maximum height of 6 feet.

The Contractor shall identify what they can supply in terms of materials, labor, equipment, supplies, supervision, quality control, and incidentals required

to complete the work described. The Contractor shall perform all work in a safe and conscientious manner.

(b) Project Location - Santa Fe National Forest, Cuba Ranger District. Counselor, Ojo Encino, and Torreon Chapters on the Navajo Nation.

(c) Work Schedule - Preferred start is January 2023, with completion by December 2023

See Attachment A for Rock Creek Project area and units. See Attachment B for hauling routes.

Pricing Schedule

Contractor shall price work according to the schedule below. Prevailing wages are required per conditions of funding sources.

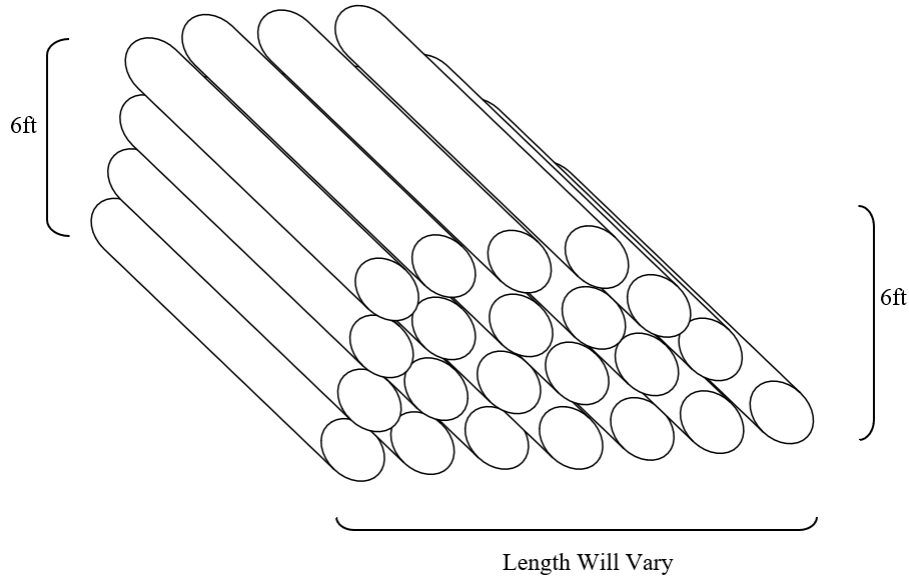
Description	Unit	Unit Cost	Quantity	Total Cost
Haul whole-logs to Chapter Houses	Loads		30-60	

Other Project Requirements and Specifications

(a) Utilities – In many locations there will be no or limited sanitation, water, electrical or housing services available. The Contractor shall make its own arrangements for temporary facilities if needed.

(b) Specifications – Project work shall be accomplished in accordance with the following:

- Contractor will move decked material from the Rock Creek Project area to the Tri-Chapters using a self-loading truck. The log truck must be self-loading and adhere to all local, state, and federal laws pertinent to hauling timber (i.e., legal truck, CDL driver, etc.).
- Decks at the project area are already in place and vary in size and height.
- Contractor will unload and create log decks at each Chapter House with a maximum height of 6 feet.
- Decks shall be stacked in a neat and orderly fashion.



- Contractor will access each Chapter’s yard by coordinating with on-site contacts provided by the NFF.
- Contractor will alternate deliveries between the Tri-Chapters; Ojo Encino, Torreon, and Counselor. The final delivery schedule will be determined by the National Forest Foundation.
- Locations of the proposed hauling routes are detailed in Attachment B.

Contractor Qualifications

- (a) Past Experience – Please provide a brief explanation of previous work experience with land management agencies.

Insurance Requirements

Upon selection of the winning bid, chosen contractor will be asked to affirm that it has and shall maintain State minimum workers’ compensation insurance coverage for its employees, if any. The selected contractor shall also maintain broad form general liability, property damage, and automotive liability insurance in the minimum amount of \$1,000,000 for bodily injury, death, or damage to property of any person and \$2,000,000 for bodily injury, death, or damage to property of more than one person. The Contractor shall name NFF an Additional Named Insured and provide NFF with documentation evidencing such coverages.

Quote Submission

Submit bids via email to stortz@nationalforests.org by January 18, 2023.

Contractor Selection Process

Based on the outcomes of that selection process, the NFF will notify successful and unsuccessful bidders by January 31, 2023 and will prepare a separate contract document.

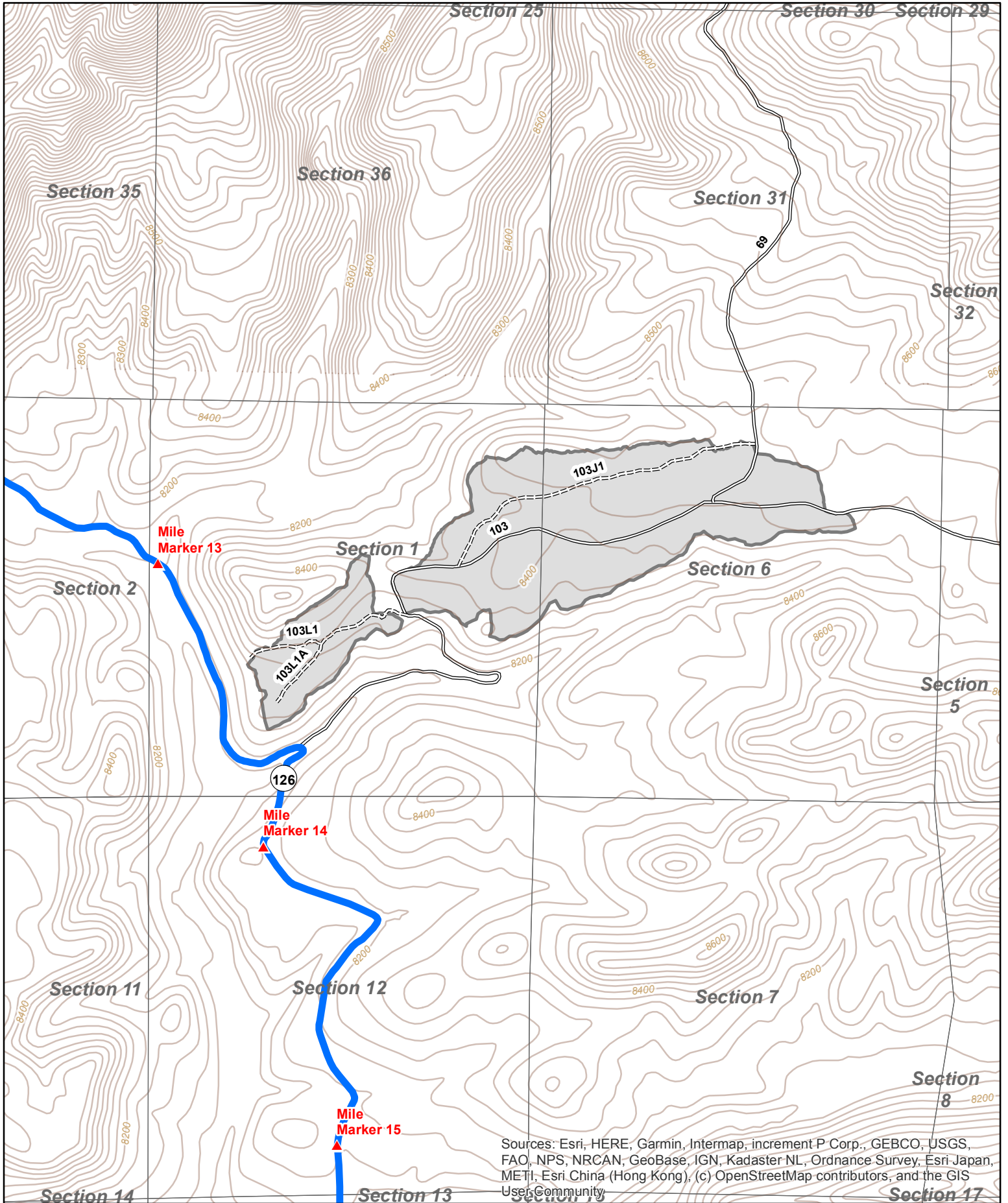
Point of Contact

For questions about the details of producing the bid, please contact:

Sasha Stortz
National Forest Foundation Southwest Senior Program Manager
928.961.0318
sstortz@nationalforests.org

ROCK CREEK WOOD FOR LIFE - REQUEST FOR QUOTES

ATTACHMENT A: ROCK CREEK STEWARDSHIP CONTRACT AREA



Sources: Esri, HERE, Garmin, Intermap, increment P Corp., GEBCO, USGS, FAO, NPS, NRCAN, GeoBase, IGN, Kadaster NL, Ordnance Survey, Esri Japan, METI, Esri China (Hong Kong), (c) OpenStreetMap contributors, and the GIS User Community

ROCK CREEK WOOD FOR LIFE - REQUEST FOR QUOTES

ATTACHMENT B: HAUL ROUTES & DESTINATIONS

