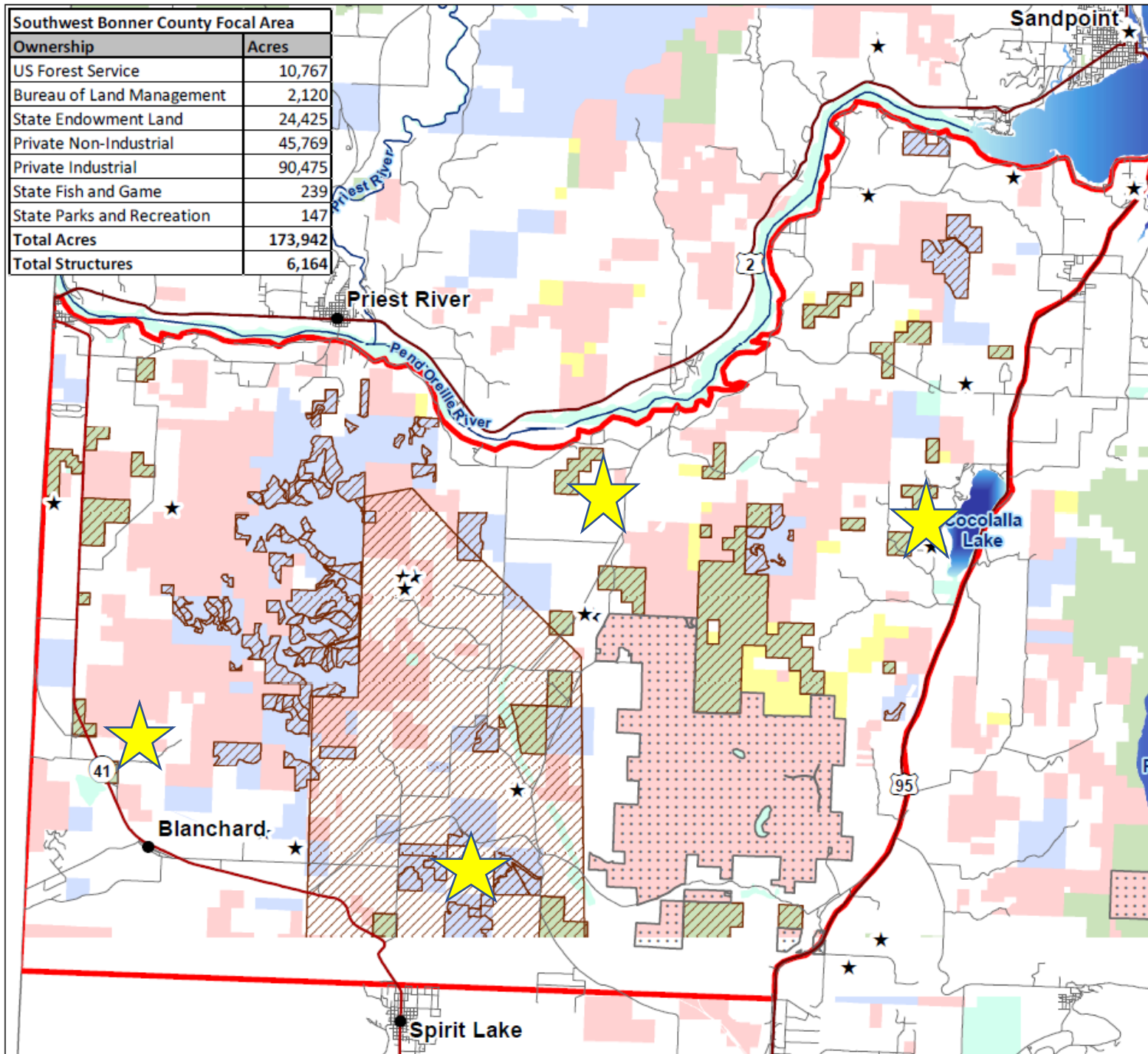


Southwest Bonner County Focal Area	
Ownership	Acres
US Forest Service	10,767
Bureau of Land Management	2,120
State Endowment Land	24,425
Private Non-Industrial	45,769
Private Industrial	90,475
State Fish and Game	239
State Parks and Recreation	147
<b>Total Acres</b>	<b>173,942</b>
<b>Total Structures</b>	<b>6,164</b>



### Shared Stewardship

Southwest Bonner County Focal Area

#### Legend

- ★ Bonner County Interest
  - 🔴 Focal Area
  - 🟫 Future Activity Areas
  - 🟪 Cladstone Meadows
  - 🛣️ US Highway
  - 🛣️ State Highway
  - 🛤️ Public Roads
- Land Ownership
- 🟦 State Endowment
  - 🟩 Forest Service
  - 🟨 Bureau of Land Management
  - 🟩 Other State/Federal Lands
  - 🟧 Tribal
  - 🟪 Private Industrial
  - 🟩 Private

